

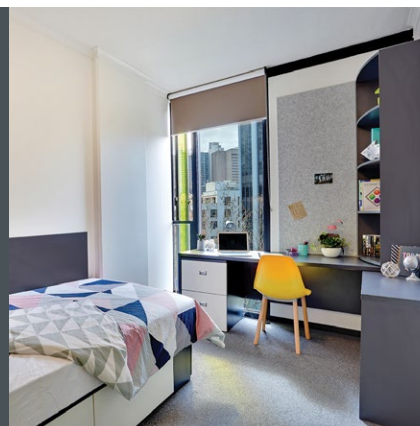


## Accommodation manual 2024 - 2025

WIDE RANGE  
OF QUALITY  
ACCOMMODATION  
OPTIONS



STUDENT  
RESIDENCES



CHOOSE  
YOUR HOME  
AWAY FROM HOME



HOMESTAY  
FAMILIES



STUDENT  
APARTMENTS



# Accommodation options

At ELC and ELC Career College, we understand that it is important to every student to stay in an environment where they feel comfortable and at home. As every student has different preferences and budgets we offer a range of quality accommodation options to suit everyone's expectations and needs. All of these choices will give students a comfortable and safe environment where they can study, relax and enjoy their time in Sydney.

## ELC Premium Apartment

### STUDENT RESIDENCE

**Experience the most premium standards in international student accommodation by opting for this large, vibrant, modern residence. Share your apartment with only 5 other ELC students and enjoy the privacy of a large ensuite single room.**

- > Independent living with friends from all over the world
- > Sydney's highest standards in a student residence
- > Amazing facilities, such as a gym, landscaped courtyard, cinema room, gaming room, BBQ area, and much more!
- > Self-catering with modern, equipped kitchen
- > 6 students per apartment
- > Exclusive to ELC students
- > Single rooms with private bathrooms
- > 10 mins walk to school!

## Link 2

### STUDENT SHARED APARTMENTS

**Experience the best of Sydney by staying right in the city centre in shared accommodation.**

- > Independent living with friends from all over the world
- > Brand new, modern, fully-furnished and equipped student apartments
- > Self-catering with modern, equipped kitchen
- > 10-14 students per apartment
- > City centre locations
- > Choice of single or twin rooms
- > 10 mins walk to school!

## Homestay

**Experience the typical Australian life with a friendly host family.**

- > Our families are carefully selected for their warmth and genuine interest in students
- > Homes are all comfortable and clean and close to public transport
- > Single rooms (twin rooms only for 2 friends or couples)
- > Students will share family life, including mealtimes
- > Usually 35 to 60 mins door-to-door to ELC by public transport (suburban trains or buses)

## CozyStay

### STUDENT SHARED HOUSES

**Experience shared accommodation with other international students in popular and vibrant neighbourhoods close to the city centre.**

- > Independent living with friends from all over the world
- > 4-12 students per house
- > Twin rooms
- > Self-catering with modern, equipped kitchens
- > Approximately 30-45 mins to ELC by bus or train

## Student Home

### STUDENT SHARED APARTMENTS

*(Previously known as Studyhouse 617)*

**Experience shared accommodation in the city with other international students, many from ELC.**

- > Independent living with friends from all over the world
- > 4 large, fully-furnished and equipped apartments in the same building
- > Self-catering with modern, equipped kitchen
- > 8-10 students per apartment
- > Very popular with ELC students
- > Choice of single or twin rooms
- > 10 mins walk to school!



### *Looking for another accommodation option?*

**Darling Square and Darling House:** These 2 residences now only accept bookings for full semesters, i.e. minimum 6-month stays, falling either January to June or July to December. If you have enquiries for matching dates, we would be happy to enquire about availability or organise a booking at either of these residences.

**Ultimo Terraces:** This student house closed in 2020. Your best alternative is either Student Home or Link2, who both offer similar features, or upgrading to the ELC Premium Apartment.

**Contact ELC for advice on alternative accommodation options in Sydney**

## HOW LONG SHOULD STUDENTS BOOK FOR?



*Many students initially book for 4 to 12 weeks. Our Accommodation Manager can meet them in person and help them in the search for their subsequent accommodation. However, keep in mind that availability may be limited with a shorter lead time so early bookings are recommended.*

*We recommend 12-week bookings in high season (September-February)*





Manly

Taronga Zoo

Harbour Bridge

Opera House

The Rocks

Sydney Tower

Casino

Fish Market

Supermarket

Darling Harbour

IMAX

Swimming Pool

Wentworth Park

Library

PIER St

Student Home

ULTIMO Rd

ELC Premium Apartment

Link2

to Cozzystay 1

Central Station

Centennial Park

Bondi

Bondi Junction

OXFORD St

BATHURST St

DRUIT St

Town Hall

TOWN HALL STATION

QVB

YORK St

KENT St

SUSSEX St

DAY St

ELC

PARK St

PITT St

GEORGE St

Darling Harbour

MILLER St

GLEBE POINT Rd

PARRAMATTA Rd

The University of Sydney



# ELC Premium Apartments

STUDENT RESIDENCE



1/4

## Residence features



The ELC Premium Apartments are two 6-bedroom apartments inside a vibrant, modern international student residence in the heart of Sydney. Inside each apartment, the 6 students each have their own ensuite single room, share a kitchen and lounge area and enjoy access to all residence facilities.

## Residence features

### Location

The residence is located only a 10-min walk to ELC, close to public transport, shops and cinemas.

### Residence facilities

- > 24/7 reception
- > Secure swipe card access, intercom and CCTV
- > Large social lounge on the ground floor with computers and unlimited wireless internet connection
- > Landscaped courtyard with BBQ, tables and benches
- > Cinema room & console gaming stations
- > Study rooms
- > Gym
- > Pool table and table tennis
- > Modern card operated laundry
- > Secure bike storage

### Activities

The residence organises a community engagement program with various activities every week. By joining these, students will discover Sydney, engage in community projects and socialize and make friends with other students from the residence.

### Other students in the residence

The residence welcomes both domestic and international students. Most of them study at university. Most residents come from:

- > USA
- > China
- > Australia
- > Hong Kong
- > Indonesia
- > Brazil
- > India
- > Singapore





# ELC Premium Apartments

STUDENT RESIDENCE



2/4

Residence features



IDEAL FOR STUDENTS WHO...



- > want to experience life in shared accommodation and in a student residence
- > want the highest standards and access to world-class facilities
- > want to have an inter-cultural experience with students from all over the world



## MAIN TERMS



- > There is a minimum stay of 10 weeks. (contact us with exact dates for shorter stays).
- > Upon arrival, you will need to sign a copy of the residences rules.
- > A credit card charge will be made for a security deposit or bond upon check-in. The exact amount will depend on the length of stay: \$500 security deposit for stays of up to 22 weeks ; \$2,400 bond for stays of 23 weeks or longer. A refund will be processed after check out minus any fees for damages to the property. Students should expect bank charges to apply for both transactions.
- > Min 8 weeks' notice applies for any changes both before and for early departures. Refer to our published Terms and Conditions for full details.





# ELC Premium Apartments

STUDENT RESIDENCE



3/4

## Apartment features



### *The apartments inside the residence*

The two apartments each feature 6 large ensuite single bedrooms and a large lounge and kitchen area for the 6 ELC students to share. It is bright, modern, fully furnished and equipped. Every room is air-conditioned and features natural light and fresh air from large windows. Students cook for themselves or share with their flatmates.

#### *Lounge and kitchen area facilities include*

- > Large flat screen TV
- > Large fridge
- > Oven/cooker with exhaust fan
- > Microwave
- > Main kitchen equipment
- > Plenty of cupboard space
- > Cleaning equipment, iron and ironing board are available to borrow from reception.

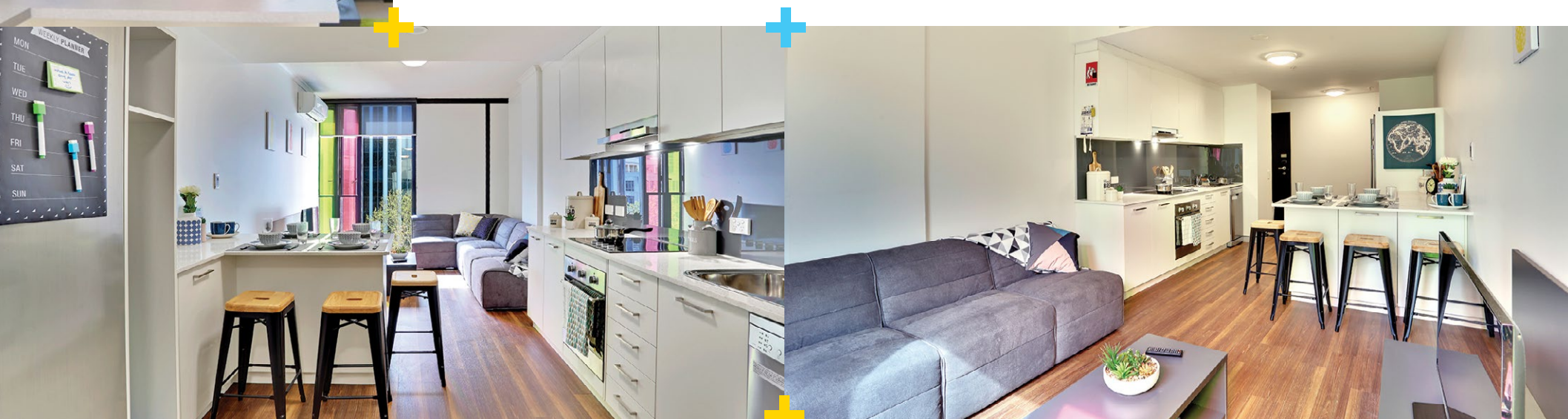
The lounge and kitchen area is cleaned by residence staff weekly.

### *Prices*

	2024	Fees applicable for nights in 2025*
Placement fee	\$395	\$395
Weekly fee	\$720/w	\$740/w

Note: A minimum 10-week stay is usually required. Please contact ELC with exact dates to enquire about the possibility of shorter bookings.

\*Exact, final 2025 prices will be confirmed around July-September 2024. Until further notice, for bookings with nights taking place in 2025, the 2025 rates above will apply as follows: the 2025 fees apply to all new bookings for nights at the ELC Premium Apartment taking place from 01/01/2025. (This means that 2 rates will apply to students arriving in 2024 and staying onto 2025: they will be invoiced 2024 rate for nights until 31/12/2024 and 2025 rate for nights from 01/01/2025.)



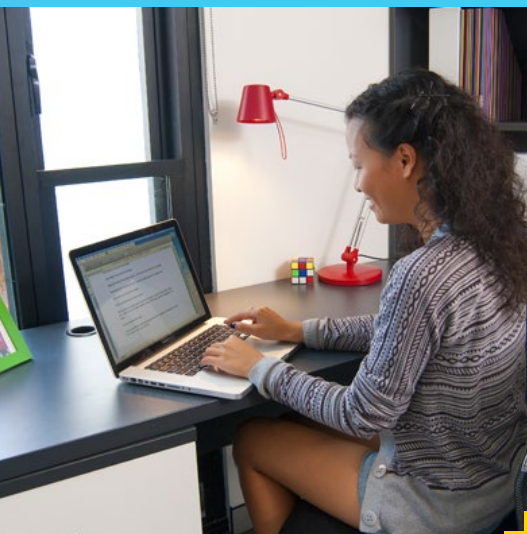
# ELC Premium Apartments

STUDENT RESIDENCE



4/4

## Ensuite single room



## Your ensuite single room inside the apartment

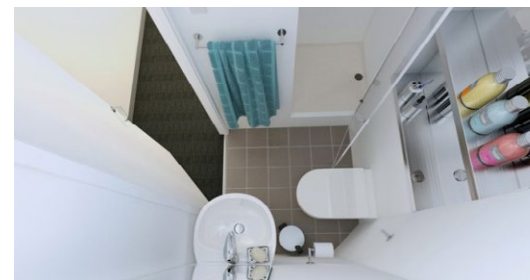
### Bedroom facilities

- > Ensuite (private bathroom with shower)
- > Personal setting for air-conditioning
- > Large window
- > King size single bed and comfy mattress
- > Towel and bed linen provided (duvet, pillow, sheets, pillow cases and mattress protector)
- > High speed WiFi
- > Study desk
- > Standard room size: 14m<sup>2</sup>
- > Built in wardrobe and extra storage
- > Bedside light
- > Full length mirror
- > Pin boards
- > Blinds

Bedroom plan



Private bathroom





# Homestay

1/2

## Homestay

Experience typical Australian family life and improve your English by speaking with your host family every day.

### Fantastic families

Families are carefully selected for their warmth and genuine interest in the student's wellbeing.

### Location

All homes are located close to public transport and usually 35 to 60 minutes travel time to the college.

### Facilities

The student's bedroom will be furnished with a single or double bed, a wardrobe, a dressing table or chest of drawers, adequate lighting and a desk. If there is no desk in the bedroom students will have a space elsewhere in the house where they can study comfortably.

### Meals

Breakfast and dinner are included every day. Lunch is also included at the weekends.

### Internet

Internet access will be made available to students at the homestay but usually at extra cost. All students will have free unlimited internet access from our computer lab and WiFi service at school.

### Other students

Many host families only accommodate one student but some families welcome 2 or more international students. When that's the case, we will make sure that there are no other students of the same mother tongue in the household.

### Laundry

Bed linen and towels are provided by the host family. Students usually wash their own personal clothing using the host's appliances and with the host's assistance. Ironing, handwashing or dry cleaning are in any case the responsibility of the student.

### Quality standards

We have a dedicated Homestay Coordinator who ensures that our students are always well looked after. We regularly inspect homes to ensure that the high standards are maintained. We actively collect feedback from all students about their stay with their host family to ensure that they feel comfortable and welcome.





# Homestay



2/2



## IDEAL FOR STUDENTS WHO...



- > *want to experience the Australian way of life*
- > *would like to receive care and support from a host family*
- > *want to maximize their studies and avoid having to shop for food and cook*

## HOMESTAY REQUIREMENTS



*At the time of enrolment, we will need to know the students' homestay requirements before we can arrange the placement.*

## HOMESTAY PREFERENCES



*We will also give students the opportunity to indicate homestay preferences which we will try to honour as much as possible when finalising the match.*

## SPECIAL REQUESTS



*ELC may also be able to organise homestay placements for students with particular needs such as specific dietary requirements, executive homestay, or a room with a private bathroom.*

Prices	2024	2025*
Homestay placement fee	\$360	\$375
Single room	\$400/w	\$440/w

- > For special requests such as special dietary requirements, private bathrooms or executive homestays, please contact ELC.
- > The above fees do not include internet access. If a student requires Internet access, a \$10/w fee is payable directly to the family upon arrival.
- > \*Exact, final 2025 prices will be confirmed around July-September 2024. Until further notice, for bookings with nights taking place in 2025, the 2025 rates above will apply as follows: the 2025 placement fee will apply to all arrivals in 2025; the 2025 homestay weekly fees will apply to all new bookings for nights at Homestay taking place from 01/01/2025. (This means that 2 rates will apply to students arriving in 2024 and staying onto 2025: they will be invoiced 2024 rate for nights until 31/12/2024 and 2025 rate for nights from 01/01/2025.)
- > Contact ELC for prices for special requests.



# Student Home

## STUDENT APARTMENTS



1/2



## Student Home

Modern share apartments, ideally located only 10-min walk to school, close to beautiful Darling Harbour, Central station, Broadway and Chinatown.

### The apartments

The 4 Student Home apartments (formerly know as Studyhouse 617) are modern, fully-equipped and located on each floor of a 4-storey building in Ultimo, just a 10-min walk to the college. Each welcomes 8-10 international students, most of whom study at ELC.

### Common areas

- > Fully-equipped modern kitchen
- > Students cook for themselves or share with their flatmates
- > Lounge with flat-screen TV & DVD player
- > Air-conditioning in the lounge and kitchen area
- > 2 bathrooms in all apartments
- > Shared laundry facilities (coin operated)
- > Professional cleaners clean all floors and communal facilities several times a week

### Bedrooms

- > Choice of single, twin or triple room
- > OK to book individuals into twin or triple rooms (share with same gender)
- > Individual wardrobe and desk unit
- > Bed linen provided
- > Room sizes: room sizes range as follows:  
Single: 5-9m<sup>2</sup>; Twin: 8-12m<sup>2</sup>; Triple 14m<sup>2</sup>

### Internet

- > 1 Apple-Mac computer for students' use in each apartment
- > Free unlimited high-speed WiFi throughout

### Safety

- > Very safe neighborhood
- > Swipe card entry to the apartments
- > Keypad locks on bedroom doors
- > Lockable wardrobes (own padlocks)
- > No staff on site but house manager on call

### Location

The apartments are located in Ultimo, a 10-min walk to the college and the city centre in general and very close to Darling Harbour. Darling Harbour is a stunning Sydney attraction, featuring the IMAX cinema, Maritime museum, Sydney Aquarium, Wildlife World and Madame Tussaud's museum, as well as shops, restaurants, cafes and bars. Students will also find a public library and an aquatic centre within a 5-min walk of the apartments. They are also very close to Central station, Broadway and Chinatown.





# Student Home

STUDENT APARTMENTS



2/2



## IDEAL FOR STUDENTS WHO...



- > want to experience life in shared accommodation
- > want to have an inter-cultural experience with students from all over the world
- > are more independent or well-travelled
- > want to be within walking distance to the city centre and to school



Prices	Fees applicable to bookings lodged until 30/06/2024	2025*
Accommodation placement fee	\$250	TBC
Single room	\$400/w	TBC
Twin room pp	\$325/w	TBC
Triple room pp	\$310/w	TBC
Short booking fee (14-26 nights)	\$50	TBC

\*Note that the current rates are guaranteed for all bookings lodged by 30/06/2024. New rates (still TBC) are expected to apply to new bookings lodged from 01/07/2024.

## MAIN TERMS



- > There is a minimum stay of 2 weeks. For stays of 2-4 weeks, an additional short-booking fee applies.
- > Students will need to sign a residents' agreement upon arrival.
- > A security deposit (bond) will be required when you move in.
- > Min 4 weeks' notice applies for cancellations as well as for early departures.



# Link2

## STUDENT APARTMENTS



1/2

### Link2

Modern, air-conditioned student apartments in ideal locations, right in the city centre, close to public transport and a 10 to 15-min walk to school.

#### The apartments

The Link2 apartments are located close to Central station. Each apartment welcomes 10 to 14 international students in single or twin rooms and sharing the communal areas.

#### Common areas

- › Fully-equipped modern kitchen
- › Students cook for themselves or share with their flatmates
- › Lounge with Plasma TV
- › Air-conditioning throughout
- › Maximum ratio of 5 students per bathroom
- › Shared laundry facilities (coin operated)
- › Professional cleaners clean all floors and communal facilities several times a week

#### Bedrooms

- › Choice of 4 room types: single, ensuite single (private bathroom), twin room or ensuite twin room. However, note that Link2 only offer 2 ensuite single rooms and these are typically booked 6 to 9 months in advance.
- › OK to book individuals into twins (share with same gender)
- › Air-conditioned
- › Individual wardrobe and desk unit
- › Room sizes: room sizes range as follows:  
Single: 5.5-9m<sup>2</sup> Twin: 11-14m<sup>2</sup>

#### Internet

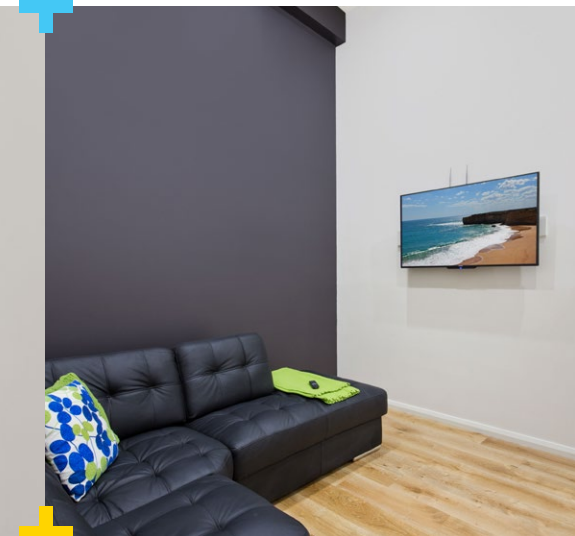
- › 1 iMac computer for students' use in each apartment
- › Free unlimited WiFi, with highest speed fibre-optic internet network, with exclusive connection for up to 3 devices per student.

#### Safety

- › Swipe card entry to the apartments
- › Swipe card entry to the bedroom
- › No staff on site but house manager on call

#### Location

The apartments are conveniently located on George St and Broadway, Sydney's busiest streets: students will enjoy shops, cafes, restaurants, pubs and entertainment options right on their doorstep. The walk to school is very short and easy: only 10 minutes. Also, being located so close to Central station, Sydney's main bus and train hub, students will be able to access any part of Sydney and its surroundings very quickly.





# Link2

## STUDENT APARTMENTS



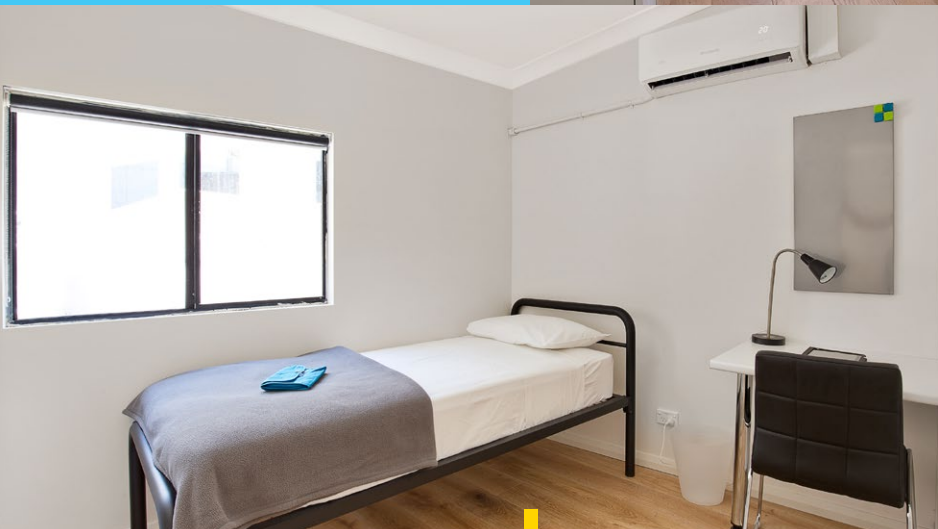
2/2



## IDEAL FOR STUDENTS WHO...



- > want to experience life in shared accommodation
- > want to have an inter-cultural experience with students from all over the world
- > are more independent or well-travelled
- > want to experience the bustling city life
- > want to be in the city centre and within walking distance to school



Prices	2024	Fees applicable for nights in 2025*
Accommodation placement fee	\$220	\$220
Single room	\$455/w	\$475/w
Ensuite single room	\$575/w	\$600/w
Twin room pp	\$345/w	\$360/w
Ensuite twin room pp	\$405/w	\$425/w
Short booking fee (14-26 nights)	\$75	\$75

\*Exact, final 2025 prices will be confirmed around July-September 2024. Until further notice, for bookings with nights taking place in 2025, the 2025 rates above will apply as follows: the 2025 fees apply to all new bookings for nights at Link2 taking place from 05/01/2025. (This means that 2 rates will apply to students arriving in 2024 and staying onto 2025: they will be invoiced 2024 rate for nights until 04/01/2025 and 2025 rate for nights from 05/01/2025.)

## MAIN TERMS



- > There is a minimum stay of 2 weeks. For stays of 2-4 weeks, an additional short-booking fee applies.
- > A credit card imprint will be required when students move in as security. A charge of up to the equivalent of 4 weeks' rent will only be made in cases of damage to the property.
- > Students will need to sign a residents' agreement at the time booking (i.e. before arrival).
- > Min 4 weeks' notice applies for cancellations before arrival as well as for early departures.
- > Additionally, a break of contract fee is charged for early departures (equivalent to 1 or 2 weeks rent).



# CozyStay

## STUDENT HOUSES

1/2



## CozyStay (2Stay)

Comfortable budget share houses offering twin share rooms and located in pleasant neighbourhoods, 30 to 45 minutes bus or train ride to school.

### The houses

CozyStay offer numerous student shared houses in popular Sydney suburbs, each welcoming between 4 and 12 students. Each house is unique but all offer the following common features:

### Common areas

- > Fully-equipped modern kitchen
- > Comfortable lounge area with TV
- > Shared by 4-12 students, with proportionate lounge and kitchen areas
- > Max ratio of 5 students per bathroom
- > Coin operated laundry facilities in each house
- > Students typically share the cleaning with their flatmates (every week, a roster is made by the house manager clearly stating everyone's housekeeping task for the week). Professional cleaners typically clean the bathrooms once a week

### Bedrooms

- > Choice of single or twin rooms
- > OK to book individuals into twin rooms (share with same gender)
- > Personal wardrobe with mirror.
- > Shared desk in each room
- > Linen: only bed sheets and a pillow are included. No doona, blanket or towels are provided.

### Location

All houses are located in popular, cosmopolitan and safe Sydney suburbs, such as Kingsford, North Sydney and Randwick. Students will be allocated to a designated house based on their travel date and cannot select a particular neighbourhood or house. All houses are located between 30 and 45 mins commute time to the city centre and to ELC (for instance 25-min bus ride plus 10-min walk)

### Internet

You will enjoy free unlimited high speed WiFi in the common areas of your house.

### Safety

- > Very safe neighborhoods
- > Personal key to your bedroom
- > House manager in each house





# CozzyStay

## STUDENT HOUSES



2/2



## IDEAL FOR STUDENTS WHO...



- > *want to experience life in shared accommodation*
- > *want to have an inter-cultural experience with students from all over the world*
- > *are more independent or well-travelled*
- > *have a more limited budget*

### Main terms

- > There is a minimum stay of 4 weeks and a maximum stay of 12 weeks.
- > Only offshore students (students not yet in Australia) may apply for this accommodation option.
- > All bookings must be received minimum 4 weeks prior to arrival.
- > Students will need to comply with the house rules. Non-compliance may lead to eviction.
- > Students are required to share the cleaning duties according to a set roster. Non-compliance may lead to eviction.
- > Minimum 4 weeks' notice applies for cancellations before arrival as well as for early departures.

### Prices

	2024	2025
Accommodation placement fee	\$335	TBC
Twin room pp	\$310/w	TBC





English Language Company  
Australia Pty Ltd

CRICOS Provider 02551G  
ABN: 89 103 550 090

e. [info@elc.edu.au](mailto:info@elc.edu.au)  
[www.elc.edu.au/english](http://www.elc.edu.au/english)

ELC Career College Pty Ltd

RTO: 91721 | CRICOS Provider 00051M  
ABN: 34 051 281 380

e. [info@elc.edu.au](mailto:info@elc.edu.au)  
[www.elc.edu.au/vocational](http://www.elc.edu.au/vocational)

495 Kent St  
Sydney NSW 2000  
Australia

t. +61 2 9267 5688

Last updated on 18 March 2024.