

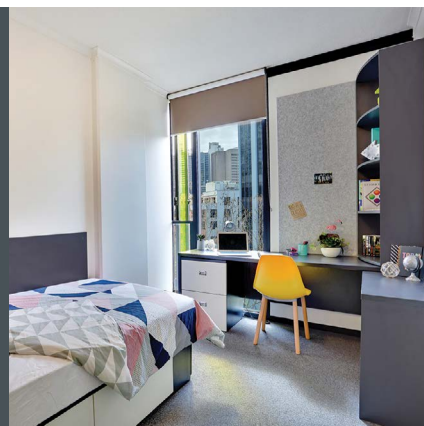


## Accommodation manual 2025

WIDE RANGE  
OF QUALITY  
ACCOMMODATION  
OPTIONS



STUDENT  
RESIDENCES



CHOOSE  
YOUR HOME  
AWAY FROM HOME



HOMESTAY  
FAMILIES



STUDENT  
APARTMENTS



# Accommodation options

At ELC and ELC Career College, we understand that it is important to every student to stay in an environment where they feel comfortable and at home. As every student has different preferences and budgets we offer a range of quality accommodation options to suit everyone's expectations and needs. All of these choices will give students a comfortable and safe environment where they can study, relax and enjoy their time in Sydney.

## Scape Quay St

### ELC Premium Apartments STUDENT RESIDENCE

**Experience the most premium standards in international student accommodation by opting for this large, vibrant, modern residence, just across the road from ELC. Share your apartment with only 5 other ELC students and enjoy the privacy of a large ensuite single room.**

- > High standards large international student residence, with staff on-site
- > 2 dedicated apartments are exclusive to ELC students
- > 6 students per apartment
- > Self-catering with modern, equipped kitchen
- > Single rooms with private bathrooms
- > Amazing residence facilities, such as a gym, landscaped courtyard, cinema room, gaming room, BBQ area, and much more!
- > Just across the road from ELC!

## Iglu Chatswood

### ELC Premium Apartments STUDENT RESIDENCE

**Experience outstanding standards in international student accommodation by opting for this large, vibrant, modern residence, just a short train ride to ELC. Share your apartment with only 4 other ELC students and enjoy the privacy of a large ensuite single room.**

- > High standards large international student residence, with staff on-site
- > 3 dedicated apartments are exclusive to ELC students
- > 5 students per apartment
- > Self-catering with modern, equipped kitchen
- > Single rooms with private bathrooms
- > Amazing residence facilities, such as a gym, landscaped courtyard, cinema room, gaming room, BBQ area, and much more!
- > Only 35 mins door-to-door to ELC by train!

## Homestay

### YOUR HOME AWAY FROM HOME

**Experience the joy of cultural exchange and genuine hospitality while immersing yourself in a new environment. Improve your English by speaking with your host family every day**

- > Our families are carefully selected for their warmth and genuine interest in students
- > Homes are all comfortable and clean and close to public transport
- > Single rooms (twin rooms only for 2 friends or couples)
- > Students will share family life, including mealtimes
- > Usually 35 to 60 mins door-to-door to ELC by public transport (suburban trains or buses)



## AVAILABILITY CHECK



### **Do you already know your travel dates?**

Refer to our accommodation availability overview pdf (updated weekly) to make sure you focus your research on properties and room types which are available for your travel dates.

**Check accommodation availability**

**Contact us to hold or book a room.**

**Contact us**

## A4S - Accommodation 4 Students

### STUDENT SHARED APARTMENTS

**Experience authentic shared student accommodation and stay in the city, walking distance to school.**

- > Independent living with international flatmates (house manager on call)
- > Array of modern shared apartments, located in or close to the city centre
- > Self-catering with modern, equipped kitchens
- > 4-8 students per apartment
- > Twin rooms
- > Approximately 10-30 min walk to ELC or short bus or train ride.

## Link 2

### STUDENT SHARED APARTMENTS

**Experience bustling Sydney life by staying right in the city centre in shared accommodation.**

- > Independent living with international flatmates (house manager on call)
- > 3 large, fully-furnished and equipped student apartments located on Sydney's main street in the city centre
- > Self-catering with fully-equipped kitchen
- > 10-14 students per apartment
- > Choice of single or twin rooms
- > 2 mins walk to school

## CozyStay

### STUDENT SHARED HOUSES

**Experience shared accommodation with other international students in popular and vibrant neighbourhoods close to the city centre.**

- > Independent living with international flatmates (house manager on call)
- > Array of shared houses, located in various areas of suburban Sydney
- > Self-catering with modern, equipped kitchens
- > 4-12 students per house
- > Twin rooms
- > Approximately 25-40 mins to ELC by bus or train

## HOW LONG SHOULD STUDENTS BOOK FOR?



Many students initially book their accommodation for 4 to 12 weeks. Our Accommodation Manager can meet them in person and help them in the search for their subsequent accommodation. However, keep in mind that availability may be limited with a shorter lead time so early bookings are recommended. We recommend minimum 12-week bookings in high season (September-February)







# Scape Quay St ELC Premium Apartments

STUDENT RESIDENCE



1/5

## Residence features



The ELC Premium Apartments are two 6-bedroom apartments located inside a vibrant, modern international student residence in the heart of Sydney.

Inside each apartment, the 6 students each have their own ensuite single room, share a kitchen and lounge area and enjoy access to all residence facilities.

### Residence features

#### Location

The residence is located just across the road from ELC, close to public transport, shops and cinemas.

#### Residence facilities

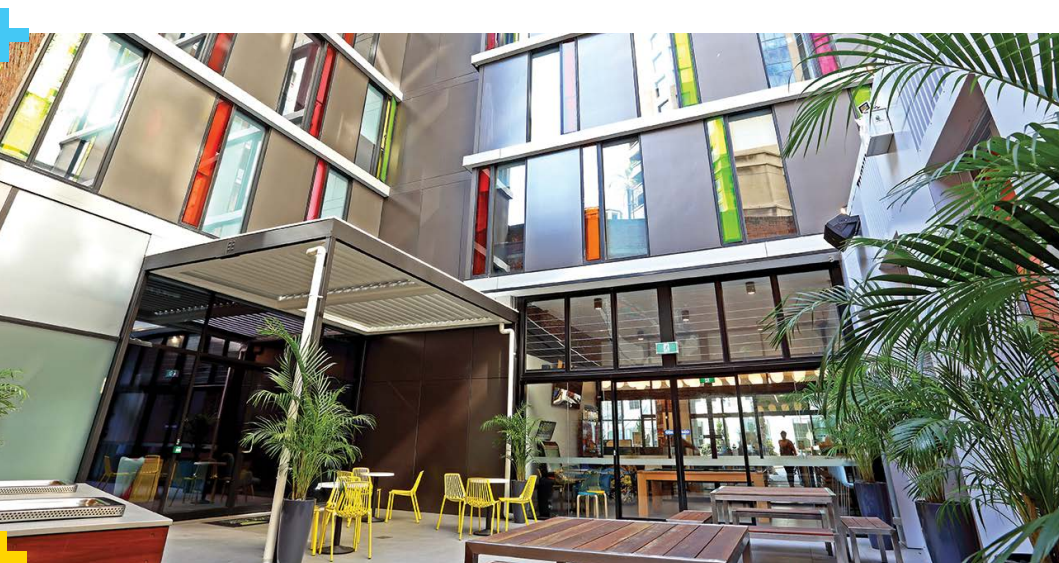
- › Secure swipe card access, intercom and CCTV.
- › Reception open from 9.00am to 6.00pm. Security staff are onsite 24/7 and arrangements can be made for check-ins and check-outs 24/7
- › Large social lounge on the ground floor with computers and unlimited wireless internet connection
- › Landscaped courtyard with BBQ, tables and benches
- › Cinema room & console gaming stations
- › Study rooms
- › Gym
- › Pool table and table tennis
- › Modern card operated laundry
- › Secure bike storage

#### Activities

The residence organises a community engagement program with various activities every week. By joining these, students will discover Sydney, engage in community projects and socialize and make friends with other students from the residence.

#### Other students in the residence

The residence welcomes both Australian and international students from all over the world. Most of them study at university.





# Scape Quay St ELC Premium Apartments

STUDENT RESIDENCE



2/5

*Residence features*





# Scape Quay St ELC Premium Apartments

STUDENT RESIDENCE



3/5

## *Apartment features*



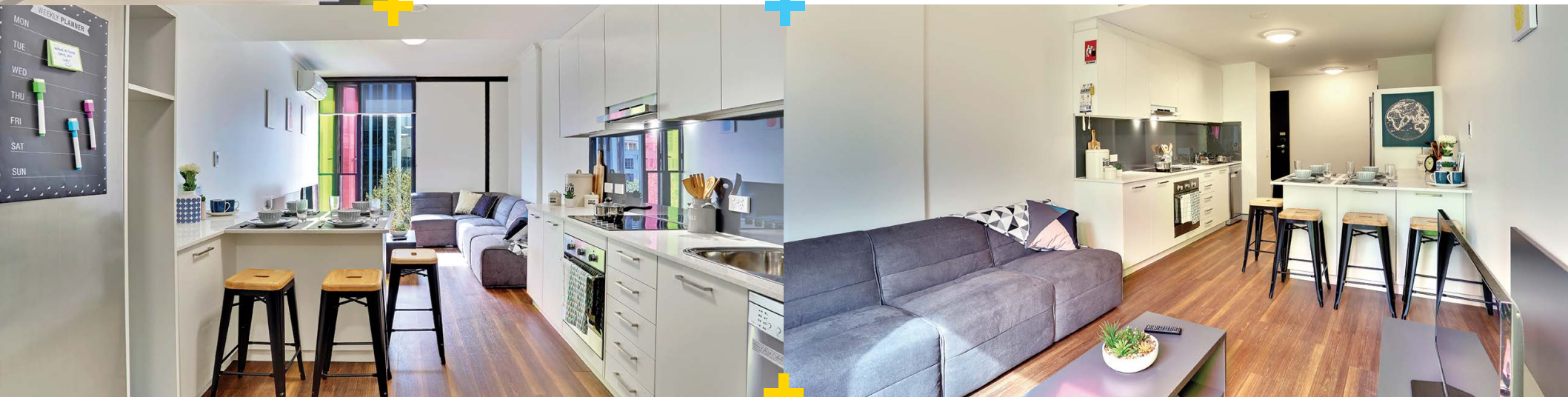
### *The apartments inside the residence*

The two ELC apartments each feature 6 large ensuite single bedrooms and a large lounge and kitchen area for the 6 ELC students to share. It is bright, modern, fully furnished and equipped. Students cook for themselves or share with their flatmates. The apartment is air-conditioned and features natural light and fresh air from large windows.

### *Lounge and kitchen area facilities include*

- > Large flat screen TV
- > Large fridge
- > Oven/cooker with exhaust fan
- > Microwave
- > Main kitchen equipment
- > Plenty of cupboard space
- > Cleaning equipment, iron and ironing board are available to borrow from reception.

The lounge and kitchen area is cleaned by residence staff weekly.



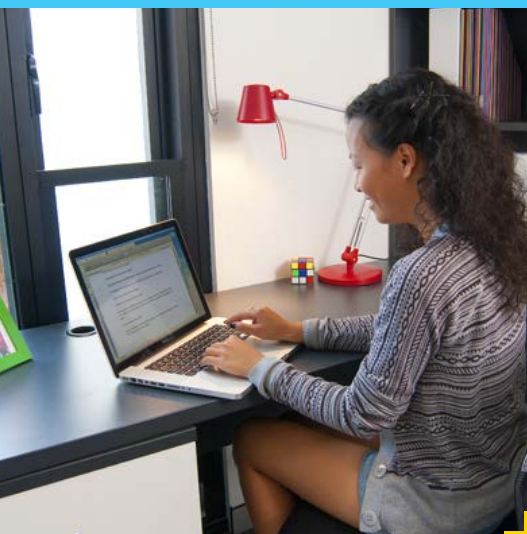
# Scape Quay St ELC Premium Apartments

STUDENT RESIDENCE



4/5

## Ensuite single room features



## Your ensuite single room inside the apartment

### Bedroom facilities

- > Secure swipe card access
- > King size single bed and comfy mattress
- > Ensuite (private bathroom with shower)
- > Brand new set of linen for students to keep, including bed sheets, quilt, pillow, pillow case, towels and bath mat, included in your placement fee
- > Personal setting for air-conditioning
- > Large window
- > High speed WiFi
- > Study desk
- > Built in wardrobe and extra storage
- > Bedside light
- > Full length mirror
- > Pin boards
- > Blinds
- > Standard room size: 14m<sup>2</sup>

### Bedroom plan



### Private bathroom





# Scape Quay St ELC Premium Apartments

STUDENT RESIDENCE



5/5

## Prices and main terms

### IDEAL FOR STUDENTS WHO...



- > *want to experience life in a student residence and a shared apartment*
- > *want higher standards and access to modern facilities*
- > *want to enjoy top quality ensuite single rooms and want to stay in the city centre*
- > *want to have an inter-cultural experience with students from all over the world*

### Prices

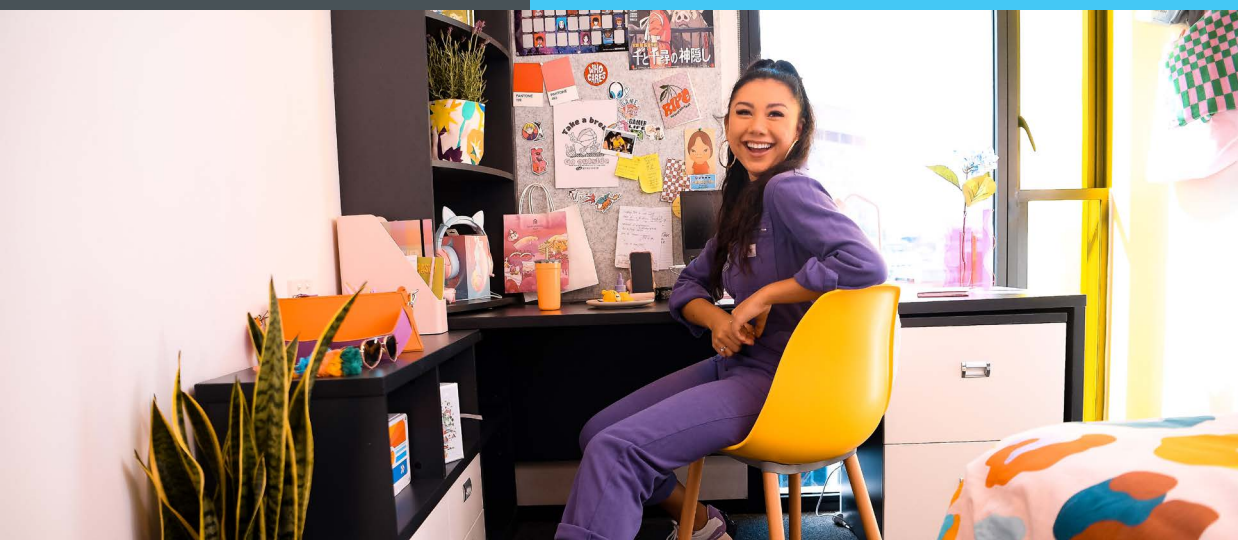
Placement fee	\$395
Weekly fee 2025	\$770/w
Low season special (May-August 2025)	\$695/w
Weekly fee 2026	\$825/w
Low season special (May-August 2026) - early bird special	\$745/w

Note: Refer to full price list for exact application dates of the low season specials.

### MAIN TERMS



- > There is a minimum stay of 10 weeks.  
(contact us with exact dates for shorter stays).
  - > Upon arrival, you will need to sign a copy of the residence rules.
  - > A credit card charge will be made for a security deposit or bond upon check-in. The exact amount will depend on the length of stay: \$500 security deposit for stays of up to 22 weeks ; \$2,620 bond for stays of 23 weeks or longer. A refund will be processed after check out minus any fees for damages to the property. Students should expect bank charges to apply for both transactions.
  - > Minimum 8 weeks' notice applies for any changes both before arrival and for early departures.
- Refer to our published Terms and Conditions for full details.





# Iglu Chatswood ELC Premium Apartments

STUDENT RESIDENCE



1/5

## Residence features



Iglu Chatswood is a modern international student residence, located a 35-minute commute to ELC. We offer three 5-bedroom apartments reserved exclusively for ELC students. Inside each apartment, the 5 students each have their own ensuite single room, share a kitchen and lounge area and enjoy access to all residence facilities.

## Residence features

### Location

The residence is located in Chatswood, a modern, cosmopolitan and vibrant neighbourhood with all possible amenities students can wish for. A major premium shopping centre is located just a 5-min walk from the residence, featuring major shops, restaurants, grocery stores and cinema.

### Residence facilities

- > Secure swipe card access and intercom.
- > Reception open from 9.00am to 7.00pm Mon-Fri (9:30-6:00 on weekends). Security staff are onsite 24/7. Resident student leaders can assist with early or late check-ins or departures.
- > Modern building with free unlimited high-speed wifi
- > Landscaped courtyard with BBQ
- > Study rooms
- > Large student lounge
- > Cinema room
- > Table tennis
- > Gym
- > Modern laundry
- > Secure bike storage
- > Vending machines and more

Note: Although Iglu advertise a complimentary light breakfast for all residents, the hours at which this breakfast is made available limits the ability for ELC students to benefit from this complimentary service.

### Commute to ELC

The residence is conveniently located right next to Chatswood Station, offering students two quick and reliable transport options to ELC at Central Station.

They can either:

- > Commute via regular Sydney trains, taking students directly to the Central station - Sydney's main transport hub, located just across the road from the school. Total commute time of 39 minutes door to door; or
- > Commute via the new high speed metro line, also connecting Chatswood to Central Station. Total commute time of 27 minutes door to door.

### Activities

The residence has a monthly activities program. Students have the opportunity to explore Sydney, participate in events and connect with other residents.

### Other students in the residence

The residence offers a diverse nationality mix with students from all over the world, including many Australian students, making it an excellent option for ELC students.





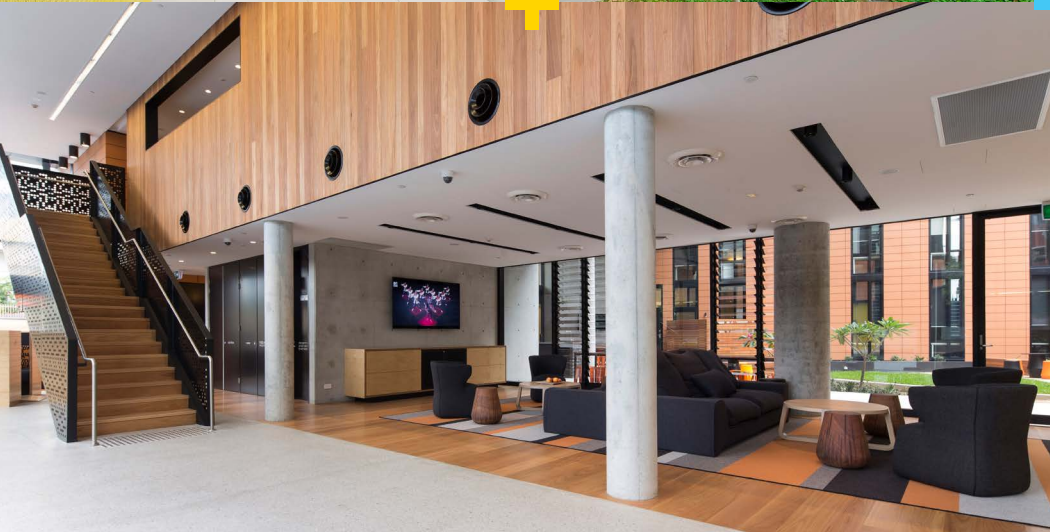
# Iglu Chatswood ELC Premium Apartments

STUDENT RESIDENCE



2/5

*Residence features*





# Iglu Chatswood ELC Premium Apartments

STUDENT RESIDENCE



3/5

## *Apartment features*



## *The apartments inside the residence*

The three ELC apartments each feature 5 large ensuite single bedrooms and a large lounge and kitchen area for the 5 ELC students to share. The apartments are bright, modern, fully-furnished and equipped. Students cook for themselves or share with their flatmates. The apartment is air-conditioned and features natural light and fresh air from large windows.

### *Lounge and kitchen area facilities include*

- › Secure swipe card access
- › Television with Apple TV
- › Lounge area with couch/coffee table
- › Dining table and chairs
- › Fully-equipped modern kitchen
- › Main kitchen equipment: oven, microwave, stovetop, large refrigerator, freezer, kettle and toaster
- › Cleaning equipment

The lounge and kitchen area is cleaned by residence staff fortnightly.



# Iglu Chatswood ELC Premium Apartments

STUDENT RESIDENCE



4/5

## Ensuite single room features

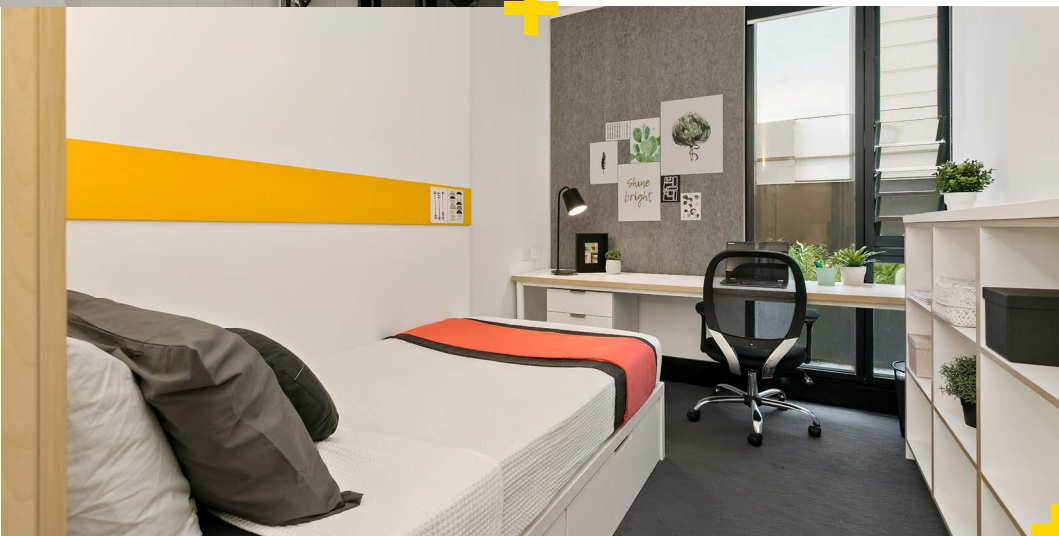


### *Your ensuite single room inside the apartment*

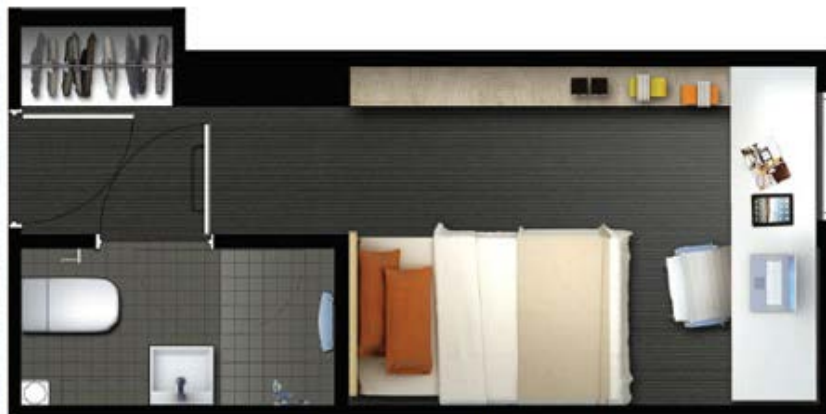
Enjoy your own modern and comfortable single room with private bathroom.

#### *Bedroom facilities*

- > Secure swipe card access
- > King single bed
- > Ensuite (private bathroom with shower)
- > Brand new set of linen for students to keep, including bed sheets, quilt, quilt cover, pillow, pillow case and towels, included in your placement fee
- > Study desk, chair and lamp
- > Personal setting for air-conditioning
- > Built-in reading light
- > Built-in wardrobe
- > Under-bed storage
- > Bookshelf and pinboard
- > Plenty of storage
- > Full length mirror
- > Acoustic louvre windows
- > Room size: 12-14m<sup>2</sup>



Bedroom plan





# Iglu Chatswood ELC Premium Apartments

STUDENT RESIDENCE



5/5

## Prices and main terms

### IDEAL FOR STUDENTS WHO...



- > *want to experience life in a student residence and a shared apartment*
- > *want higher standards and access to modern facilities*
- > *want to enjoy top quality ensuite single rooms and are happy to be just outside the city centre*
- > *want to have an inter-cultural experience with students from all over the world*

### Prices

Placement fee	\$395
Weekly fee - Sep 2024 to April 2025	\$615/w
Low season special - May to August 2025	\$550/w
Weekly fee - Sep 2025 to April 2026	\$675/w
Low season special - May to August 2026	\$575/w
52-week special (regardless of time of year)	\$565/w

Notes: The placement fee includes both the Iglu admin fee, linen fee and exit cleaning fee.

Refer to full price list for exact application dates of the low season specials.

### MAIN TERMS



- > There is a minimum stay of 4 weeks.
- > Upon arrival, you will need to sign a copy of the residence rules.
- > A \$500 security deposit will be collected at school on your first day. A refund will be processed after check out minus any fees for damage to the property. Students should expect bank charges to apply for both transactions
- > Minimum 8 weeks' notice applies for any changes both before arrival and for early departures.

Refer to our published Terms and Conditions for full details.





# Homestay

1/2

## Homestay

Experience cultural exchange and genuine hospitality while immersing yourself in a new environment and improve your English by speaking with your host family every day.

### Fantastic families

Families are carefully selected for their warmth and genuine interest in the student's wellbeing.

### Location

All homes are located close to public transport and usually 35 to 60 minutes travel time to the college.

### Facilities

The student's bedroom will be furnished with a single or double bed, a wardrobe, a dressing table or chest of drawers, adequate lighting and a desk. If there is no desk in the bedroom students will have a space elsewhere in the house where they can study comfortably.

### Meals

Breakfast and dinner are included every day. Lunch is also included at the weekends.

### Internet

Internet access will be made available to students at the homestay but usually at extra cost. All students will have free unlimited internet access from our computer lab and WiFi service at school.

### Other students

Many host families only accommodate one student but some families welcome 2 or more international students. When that's the case, we will make sure that there are no other students of the same mother tongue in the household.

### Laundry

Bed linen and towels are provided by the host family. Students usually wash their own personal clothing using the host's appliances and with the host's assistance. Ironing, handwashing or dry cleaning are in any case the responsibility of the student.

### Quality standards

We have a dedicated Homestay Coordinator who ensures that our students are always well looked after. We regularly inspect homes to ensure that the high standards are maintained. We actively collect feedback from all students about their stay with their host family to ensure that they feel comfortable and welcome.





# Homestay



2/2



## IDEAL FOR STUDENTS WHO...



- > would like to experience cultural exchange
- > would like to receive care and support from a host family
- > want to maximize their studies and avoid having to shop for food and cook

## HOMESTAY REQUIREMENTS



*At the time of enrolment, we will need to know the students' homestay requirements before we can arrange the placement.*

## HOMESTAY PREFERENCES



*We will also give students the opportunity to indicate homestay preferences which we will try to honour as much as possible when finalising the match.*

## SPECIAL REQUESTS

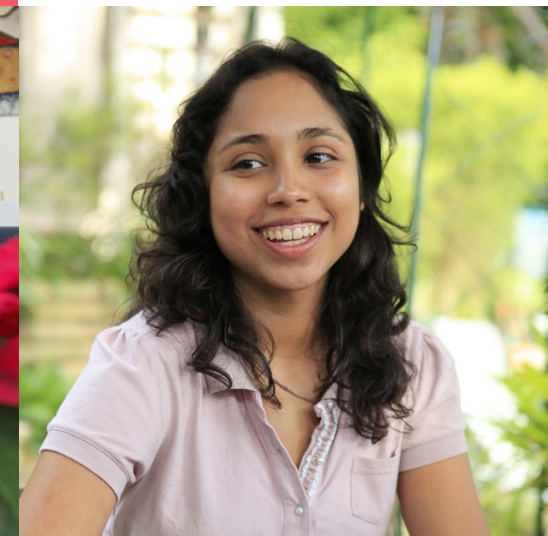


*ELC may also be able to organise homestay placements for students with particular needs such as specific dietary requirements, executive homestay, or a room with a private bathroom.*

## 2025 Prices

Homestay placement fee	\$375
Single room	\$425/w

- > For special requests such as special dietary requirements, private bathrooms or executive homestays, please contact ELC.
- > The above fees do not include internet access. If a student requires Internet access, a \$10/w fee is payable directly to the family upon arrival.
- > 2026 fees: Note that the above prices are only applicable for nights until 03/01/2026. Nights from 04/01/2026 will be invoiced at the rates of \$450/w for single rooms. Contact ELC for other room rates for nights in 2026.
- > Contact ELC for prices for special requests.



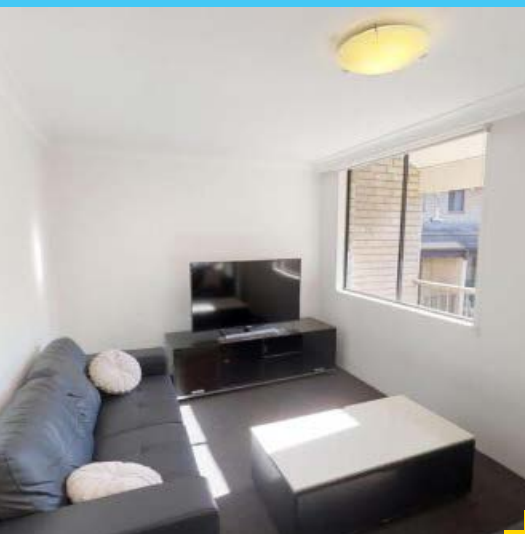
# A4S Accommodation 4 Students

STUDENT APARTMENTS



1/4

## Apartment features



## Accommodation 4 students (A4S)

A4S, in cooperation with Share My Room and Come2Au, facilitate authentic shared apartment living for students through a network of convenient and comfortable apartments, located around Sydney. One of their team members will welcome you at the airport, take you to the apartment they have allocated you, set you up with all information you need, and, from then on, you will be sharing all apartment life and responsibilities with your flatmates.

### The apartments

The apartments are typically located inside residential buildings or sometimes houses or townhouses. All apartments are fully furnished and equipped. It is important to understand that the A4S apartments are all different from each other in terms of size and features. Access to facilities differ and the apartments do not have managers on site.

### Open mind feature

A4S will allocate your booking based on your arrival date, matching it to another student's departure date. You cannot choose your apartment and will receive your apartment address and profile 2-4 weeks prior to your arrival.

By choosing to book accommodation with A4S, it is important to keep an open mind about the apartment size, number of flatmates, exact location and apartment facilities. You can review the A4S website [here](#): if you feel that any of the properties on that page would not meet your desired standards, then A4S might not be the accommodation option for you.

### Location

The A4S apartments are located in various areas of Sydney. Upon enrolment, you will be given 2 options:

- › **City Center (including close-by suburbs):** A4S place ELC students in their apartments located either in the city centre or in the neighbouring suburbs such as Pyrmont, Ultimo or Chippendale. **All of these apartments are walking distance to ELC.** The walking distance is typically 10-30 minutes, although some students prefer to catch a bus or light rail tram for a few stops. Unless 'suburbs' (see below) are requested at a cheaper price all A4S placements will be in these locations.
- › **Suburbs (public transport access only):** A4S also offers apartments located in suburbs further from the centre such as Rockdale, Kogarah, Hurstville or Artarmon, which are typically 35-60 minutes to school by public transport. This range is cheaper and available to book upon request.





# A4S Accommodation 4 Students

STUDENT APARTMENTS



2/4

## Apartment features



### Other students in the apartments

The apartments welcome 3 to 8 students each, with 4 and 6 being the most common number of residents. Your flatmates will be international students like you, but please note that they most likely will not be studying at ELC.

### Common areas

All apartments feature a common area and include a fully equipped kitchen, a dining area and a lounge area with modern TV. The size of the common area is always proportionate to the number of residents. Note that not all apartments have air conditioning but have fans instead. All apartments have a washing machine and a dryer which are free to use (you just need to buy your own washing powder).

### Internet

All apartments include free, unlimited WiFi.

### Bathrooms

All apartments have minimum 1.5 bathrooms which you will share with your flatmates.

### Cleaning responsibilities

You and your flatmates will be responsible for keeping the apartment clean, as well as purchasing cleaning products (such as dishwashing liquid, sponges and bin bags). An A4S staff member will visit the apartment each week to ensure that it is kept in good standard. Note that they could issue warning letters or eventually a cleaning bill if they find the apartment in an unsatisfactory condition

### Free A4S airport transfer

As part of their arrival procedure, A4S offer a complimentary airport transfer service. This means that an A4S (/Share My Room) staff member will pick you up from the airport, drive you to your accommodation, give you your key, collect your bond, give you WiFi access and will help you get set up, all free of charge! In order to coordinate the delivery this service, your designated A4S driver will contact you via WhatsApp a few days prior to your arrival.

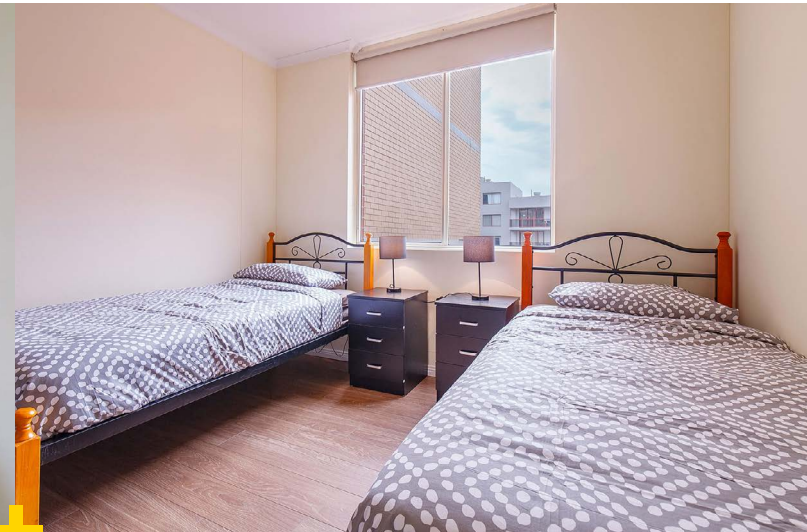
# A4S Accommodation 4 Students

## STUDENT APARTMENTS



3/4

### Bedroom features



### Your bedroom

A4S only offer twin rooms. This means that:

- › If you are travelling with a friend, you can request to share a twin room with each other.
- › If you are travelling by yourself, A4S will place you in a room with another student of the same gender.

Note that the A4S bedrooms generally only feature 2 single beds and either a wardrobe or a chest of drawers (most bedrooms do not include desks).

### Safety

All apartments are located in safe neighbourhoods and have locks on all external doors. However, please note that bedrooms do not have locks and most apartments welcome both male and female students.

### Girls only apartments

For peace of mind, our female applicants have the option to apply for a girls only apartment. Note that availability is limited and that requests need to be made at the time of booking.

### Bed linen

All bed linen, including pillow and doona, will be provided. Although bed linen is included, it is important to note that this is passed on from one student to the next, as outlined in the check out duties section below. Students are welcome to bring or buy their own set of linen to fit a standard single bed if preferred.

### Check out duties

At A4S, it is the student's responsibility to make sure their room is left ready for the next occupant. Students must wash and dry their sheets and put them back on the bed, as well as leave the room clean and tidy. Rooms will be inspected by cleaners who are in charge of room turn-around.



# A4S Accommodation 4 Students

STUDENT APARTMENTS



4/4

Prices and main terms



## IDEAL FOR STUDENTS WHO...



- > Want to experience life in a shared apartment
- > Are more independent and are used to looking after the cleaning of their home
- > Want to have an inter-cultural experience with students from other countries and who may study in different schools
- > Are more mature, responsible and open-minded
- > Want to live within walking distance to school

## 2025 Prices

Placement fee (including free airport transfer)	\$320
City centre - Twin room	\$330/w
City centre - Twin room in girls only apartment	\$330/w
Suburbs - Twin room	\$230/w

The above prices apply for nights in 2026 until further notice.

## MAIN TERMS

- > There is usually a minimum stay of 4 weeks. Contact us with exact dates to enquire about the possibility of a shorter stay
- > Upon arrival, you will need to sign a copy of the residence rules. Non-compliance may lead to fines or expulsion.
- > Students need to share the cleaning duties with their flatmates.
- > A \$500 security deposit will be collected when you move in. A refund will be processed after check out minus any fees for damage to the property. Students should expect bank charges to apply for both transactions
- > Minimum 3 weeks' notice applies for any changes before arrival.
- > A \$150 break of contract fee applies for early departure and 4 weeks notice should be given.

Refer to our published Terms and Conditions for full details.





# Link2

## STUDENT APARTMENTS



1/2

### Link2

Convenient student shared apartments right in the city centre, close to public transport and just a 2-min walk to school.

#### The apartments

The Link2 apartments are located close to Central station, on a busy street in the heart of the city. Each apartment welcomes 10 to 14 international students in single or twin rooms and sharing the communal areas.

#### Common areas

- › Fully-equipped kitchen, with small breakfast bar (no dining table)
- › Students cook for themselves or share with their flatmates
- › Lounge with Plasma TV
- › Air-conditioning throughout
- › 2-3 bathrooms per apartment (Maximum ratio of 5 students per bathroom)
- › Shared laundry facilities (coin operated)
- › Professional cleaners clean all floors and communal facilities each week

#### Bedrooms

The bedrooms are small with simple furniture. They include a single bed and an individual wardrobe + desk unit per student and are air-conditioned.

- › Choice of single or twin room (limited availability for single rooms)
- › OK to book individuals into twins (share with same gender)
- › Air-conditioned
- › Individual wardrobe and desk unit
- › Room sizes: rooms are small but well arranged, with size range as follows:  
Single: 5.5-9m<sup>2</sup> Twin: 11-14m<sup>2</sup>

#### Internet

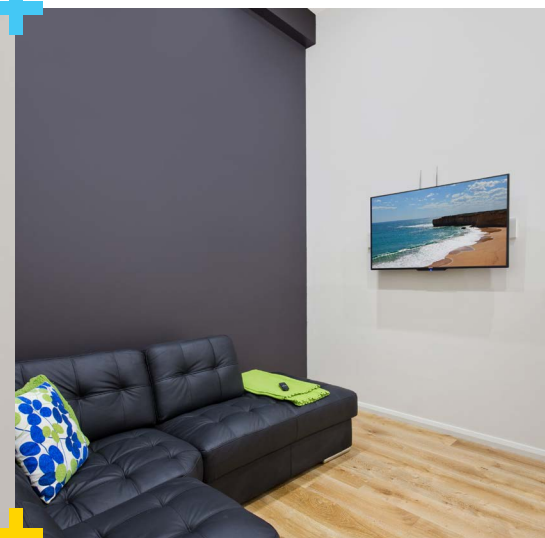
- › 1 iMac computer for students' use in each apartment
- › Free unlimited WiFi, with highest speed fibre-optic internet network, with exclusive connection for up to 3 devices per student.

#### Safety

- › Swipe card entry to the apartments
- › Swipe card entry to the bedroom
- › No staff on site but house manager on call

#### Location

The apartments are conveniently located on George St, Sydney's busiest street: students will enjoy shops, cafes, restaurants, pubs and entertainment options right on their doorstep. The walk to school is very short and easy: only 2 minutes. Also, being located so close to Central station, Sydney's main bus and train hub, students will be able to access any part of Sydney and its surroundings very quickly.





## Link2

### STUDENT APARTMENTS



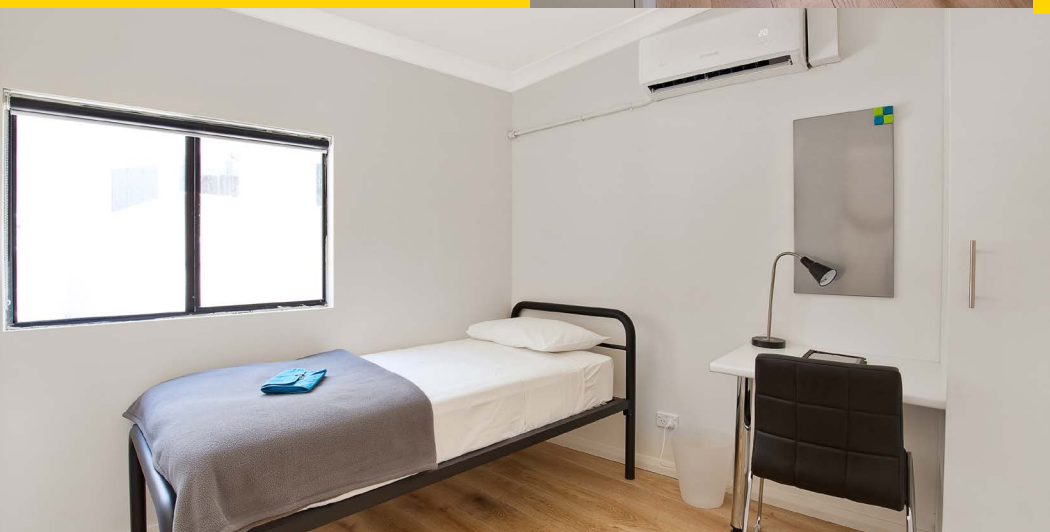
2/2



## IDEAL FOR STUDENTS WHO...



- > want to experience life in shared accommodation and do not mind sharing with 10-14 students
- > want to have an inter-cultural experience with students from all over the world
- > are more independent or well-travelled
- > want to experience the bustling city life
- > want to be in the city centre and within walking distance to school



## Prices

Placement fee	\$220
Single room	\$480/w
Twin room pp	\$370/w
Short booking fee (14-27 nights)	\$75

Note that the above prices are only applicable for nights until 03/01/2026. Nights from 04/01/2026 will be invoiced at the rates of \$500/w for single rooms and \$385/w for twin rooms.

## MAIN TERMS

- > There is a minimum stay of 2 weeks. For stays of 2-4 weeks, an additional short-booking fee applies.
- > A credit card imprint will be required when students move in as security. A charge of up to the equivalent of 4 weeks' rent will only be made in cases of damage to the property.
- > Students will need to sign a residents' agreement at the time booking (i.e. before arrival).
- > Minimum 4 weeks' notice applies for cancellations before arrival as well as for early departures.
- > Additionally, a break of contract fee is charged for early departures (equivalent to 1 or 2 weeks rent).

Refer to our published Terms and Conditions for full details.



# CozyStay

## STUDENT HOUSES



1/2



## CozyStay (2Stay)

Comfortable budget share houses offering twin share rooms and located in pleasant neighbourhoods, 30 to 45 minutes bus or train ride to school.

### The houses

CozyStay offer numerous student shared houses in popular Sydney suburbs, each welcoming between 4 and 12 students. Each house is unique but all offer the following common features:

### Common areas

- > Fully-equipped modern kitchen
- > Comfortable lounge area with TV
- > Shared by 4-12 students, with proportionate lounge and kitchen areas
- > Max ratio of 5 students per bathroom
- > Coin operated laundry facilities in each house
- > Students typically share the cleaning with their flatmates (every week, a roster is made by the house manager clearly stating everyone's housekeeping task for the week). Professional cleaners typically clean the bathrooms once a week

### Bedrooms

- > Choice of single or twin rooms
- > OK to book individuals into twin rooms (share with same gender)
- > Personal wardrobe with mirror.
- > Shared desk in each room
- > Linen: only bed sheets and a pillow are included. No doona, blanket or towels are provided.

### Location

All houses are located in popular, cosmopolitan and safe Sydney suburbs, such as Kingsford, North Sydney and Randwick. Students will be allocated to a designated house based on their travel date and cannot select a particular neighbourhood or house. All houses are located between 30 and 45 mins commute time to the city centre and to ELC (for instance 25-min bus ride plus 7-min walk)

### Internet

You will enjoy free unlimited high speed WiFi in the common areas of your house.

### Safety

- > Very safe neighborhoods
- > Personal key to your bedroom
- > House manager in each house





# CozyStay

## STUDENT HOUSES



2/2



## IDEAL FOR STUDENTS WHO...



- > *want to experience life in shared accommodation*
- > *want to have an inter-cultural experience with students from all over the world*
- > *are more independent or well-travelled*
- > *have a more limited budget*

## Prices

Placement fee	\$340
Twin room pp	\$310/w

The above prices apply for nights in 2025. Contact ELC for rates for nights in 2026.

## Main terms

- > There is a minimum stay of 4 weeks and a maximum stay of 12 weeks.
  - > Only offshore students (students not yet in Australia) may apply for this accommodation option.
  - > All bookings must be received minimum 4 weeks prior to arrival.
  - > Students will need to comply with the house rules. Non-compliance may lead to eviction.
  - > Students are required to share the cleaning duties according to a set roster. Non-compliance may lead to eviction.
  - > Minimum 4 weeks' notice applies for cancellations before arrival as well as for early departures.
- Refer to our published Terms and Conditions for full details.





**English Language Company  
Australia Pty Ltd**

CRICOS Provider 02551G  
ABN: 89 103 550 090

e. [info@elc.edu.au](mailto:info@elc.edu.au)  
[www.elc.edu.au/english](http://www.elc.edu.au/english)

**ELC Career College Pty Ltd**

RTO: 91721 | CRICOS Provider 00051M  
ABN: 34 051 281 380

e. [info@elc.edu.au](mailto:info@elc.edu.au)  
[www.elc.edu.au/vocational](http://www.elc.edu.au/vocational)

Level 5  
10 Quay Street, Haymarket  
Sydney NSW 2000  
Australia  
t. +61 2 9267 5688

Last updated on 28 May 2025