

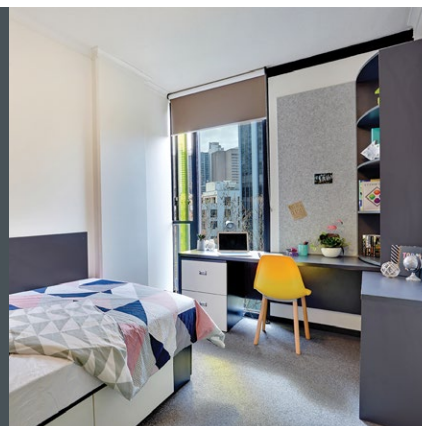


Accommodation manual 2024 - 2025

WIDE RANGE
OF QUALITY
ACCOMMODATION
OPTIONS



STUDENT
RESIDENCES



CHOOSE
YOUR HOME
AWAY FROM HOME



HOMESTAY
FAMILIES



STUDENT
APARTMENTS



Accommodation options

At ELC and ELC Career College, we understand that it is important to every student to stay in an environment where they feel comfortable and at home. As every student has different preferences and budgets we offer a range of quality accommodation options to suit everyone's expectations and needs. All of these choices will give students a comfortable and safe environment where they can study, relax and enjoy their time in Sydney.

ELC Premium Apartments STUDENT RESIDENCE

Experience the most premium standards in international student accommodation by opting for this large, vibrant, modern residence, 15mins walk to ELC. Share your apartment with only 5 other ELC students and enjoy the privacy of a large ensuite single room.

- › High standards large international student residence, with staff on-site
- › 2 dedicated apartments are exclusive to ELC students
- › 6 students per apartment
- › Self-catering with modern, equipped kitchen
- › Single rooms with private bathrooms
- › Amazing residence facilities, such as a gym, landscaped courtyard, cinema room, gaming room, BBQ area, and much more!
- › 15 mins walk to school!

Iglu Chatswood STUDENT RESIDENCE

Experience outstanding standards in international student accommodation by opting for this large, vibrant, modern residence, just a short train ride to ELC. Share your apartment with only 4 other ELC students and enjoy the privacy of a large ensuite single room.

- › High standards large international student residence, with staff on-site
- › 2 dedicated apartments are exclusive to ELC students
- › 6 students per apartment
- › Self-catering with modern, equipped kitchen
- › Single rooms with private bathrooms
- › Amazing facilities, such as a gym, landscaped courtyard, cinema room, BBQ area, and much more!
- › Only 30 mins door-to-door to ELC by train!

Link 2 STUDENT SHARED APARTMENTS

Experience the bustling Sydney life by staying right in the city centre in shared accommodation.

- › Independent living with international flatmates (house manager on call)
- › 4 large, fully-furnished and equipped student apartments located on 2 of Sydney's main streets in the city centre
- › Self-catering with fully-equipped kitchen
- › 10-14 students per apartment
- › Very popular with ELC students
- › Choice of single or twin rooms
- › 10-15 mins walk to school!

Student Home STUDENT SHARED APARTMENTS

Experience shared accommodation in the city with other international students, many from ELC.

- › Independent living with international flatmates (house manager on call)
- › 4 large, fully-furnished and equipped student apartments all located in the same 4-storey building, just outside of the city centre
- › Self-catering with fully-equipped kitchen
- › 8-10 students per apartment
- › Very popular with ELC students
- › Choice of single or twin rooms
- › 15 mins walk to school!

Homestay

Experience the warmth of a home away from home with our host families! Discover the joy of cultural exchange and genuine hospitality while immersing yourself in a new environment.

- › Our families are carefully selected for their warmth and genuine interest in students
- › Homes are all comfortable and clean and close to public transport
- › Single rooms (twin rooms only for 2 friends or couples)
- › Students will share family life, including mealtimes
- › Usually 35 to 60 mins door-to-door to ELC by public transport (suburban trains or buses)

CozyStay STUDENT SHARED HOUSES

Experience shared accommodation with other international students in popular and vibrant neighbourhoods close to the city centre.

- › Independent living with international flatmates (house manager on call)
- › Array of shared houses, located in various areas of suburban Sydney
- › Self-catering with modern, equipped kitchens
- › 4-12 students per house
- › Twin rooms
- › Approximately 30-45 mins to ELC by bus or train



AVAILABILITY CHECK



Do you already know your travel dates?

Refer to our accommodation availability overview pdf (updated weekly) to make sure you focus your research to properties and room types which are available for your travel dates.

Check accommodation availability

Contact us to hold or book a room.

Contact us

HOW LONG SHOULD STUDENTS BOOK FOR?



Many students initially book their accommodation for 4 to 12 weeks. Our Accommodation Manager can meet them in person and help them in the search for their subsequent accommodation. However, keep in mind that availability may be limited with a shorter lead time so early bookings are recommended. We recommend minimum 12-week bookings in high season (September-February)



Manly

to Iglu Chatswood

Taronga Zoo

Harbour Bridge

Opera House

The Rocks

Sydney Tower

Casino

Darling Harbour

Fish Market

Supermarket

MILLER St

Wentworth Park

Swimming Pool

IMAX

Library

PIER St

KENT St

YORK St

QVB

PITT St

DRUIT St

Town Hall

PARK St

Bondi Junction

Bondi

OXFORD St

BATHURST St

GEORGE St

SUSSEX St

DAY St

ELC

Student Home

ULTIMO Rd

ELC Premium Apartment

Link2

Central Station

Centennial Park

BROADWAY

Link2

PARRAMATTA Rd

The University of Sydney

GLEBE POINT Rd

ELC Premium Apartments

STUDENT RESIDENCE



1/4

Residence features



The ELC Premium Apartments are two 6-bedroom apartments located inside a vibrant, modern international student residence in the heart of Sydney. Inside each apartment, the 6 students each have their own ensuite single room, share a kitchen and lounge area and enjoy access to all residence facilities.

Residence features

Location

The residence is located only a 15-min walk to ELC, close to public transport, shops and cinemas.

Residence facilities

- > Secure swipe card access, intercom and CCTV.
- > Reception open from 9.00am to 6.00pm. Security staff are onsite 24/7 and arrangements can be made for check-ins and check-outs 24/7
- > Large social lounge on the ground floor with computers and unlimited wireless internet connection
- > Landscaped courtyard with BBQ, tables and benches
- > Cinema room & console gaming stations
- > Study rooms
- > Gym
- > Pool table and table tennis
- > Modern card operated laundry
- > Secure bike storage

Activities

The residence organises a community engagement program with various activities every week. By joining these, students will discover Sydney, engage in community projects and socialize and make friends with other students from the residence.

Other students in the residence

The residence welcomes both Australian and international students from all over the world. Most of them study at university.



ELC Premium Apartments

STUDENT RESIDENCE



2/4

Residence features



IDEAL FOR STUDENTS WHO...



- > want to experience life in a student residence and a shared apartment
- > want higher standards and access to modern facilities
- > want to enjoy top quality ensuite single rooms and want to stay in the city centre
- > want to have an inter-cultural experience with students from all over the world



MAIN TERMS



- > There is a minimum stay of 10 weeks. (contact us with exact dates for shorter stays).
- > Upon arrival, you will need to sign a copy of the residence rules.
- > A credit card charge will be made for a security deposit or bond upon check-in. The exact amount will depend on the length of stay: \$500 security deposit for stays of up to 22 weeks ; \$2,400 bond for stays of 23 weeks or longer. A refund will be processed after check out minus any fees for damages to the property. Students should expect bank charges to apply for both transactions.
- > Min 8 weeks' notice applies for any changes both before arrival and for early departures. Refer to our published Terms and Conditions for full details.



ELC Premium Apartments

STUDENT RESIDENCE



3/4

Apartment features



The apartments inside the residence

The two ELC apartments each feature 6 large ensuite single bedrooms and a large lounge and kitchen area for the 6 ELC students to share. It is bright, modern, fully furnished and equipped. Students cook for themselves or share with their flatmates. The apartment is air-conditioned and features natural light and fresh air from large windows.

Lounge and kitchen area facilities include

- > Large flat screen TV
- > Large fridge
- > Oven/cooker with exhaust fan
- > Microwave
- > Main kitchen equipment
- > Plenty of cupboard space
- > Cleaning equipment, iron and ironing board are available to borrow from reception.

The lounge and kitchen area is cleaned by residence staff weekly.

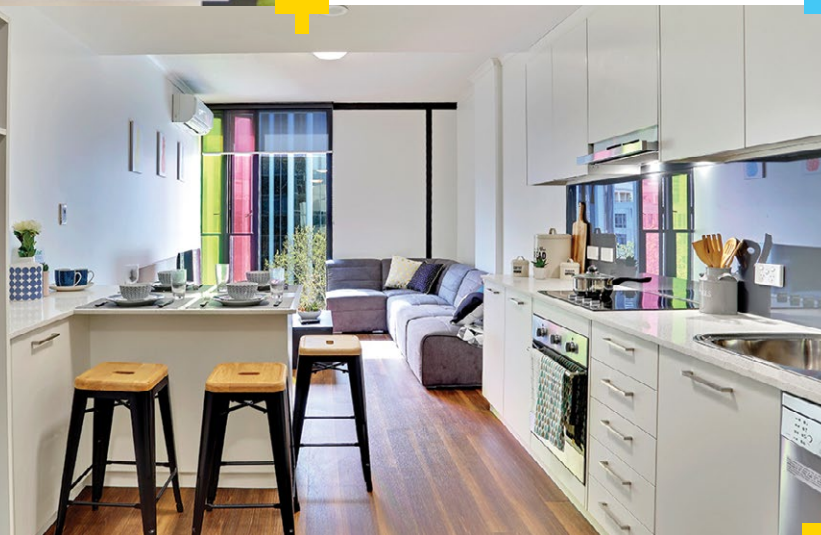
Prices

	2024	Fees applicable for nights in 2025*
Placement fee	\$395	\$395
Weekly fee	\$720/w	\$740/w
Low season special (May-August)	\$620/w	\$640/w

Note: A minimum 10-week stay is usually required. Please contact ELC with exact dates to enquire about the possibility of shorter bookings.

*Exact, final 2025 prices will be confirmed around July-September 2024. Until further notice, for bookings with nights taking place in 2025, the 2025 rates above will apply as follows: the 2025 fees apply to all new bookings for nights at the ELC Premium Apartment taking place from 01/01/2025. (This means that 2 rates will apply to students arriving in 2024 and staying onto 2025: they will be invoiced 2024 rate for nights until 31/12/2024 and 2025 rate for nights from 01/01/2025.)

Low season specials: New bookings for nights taking place from 01/05/2024 until 31/08/2024 will be invoiced at a rate of \$620/w. New bookings for nights taking place from 01/05/2025 until 31/08/2025 will be invoiced at a rate of \$640/w.



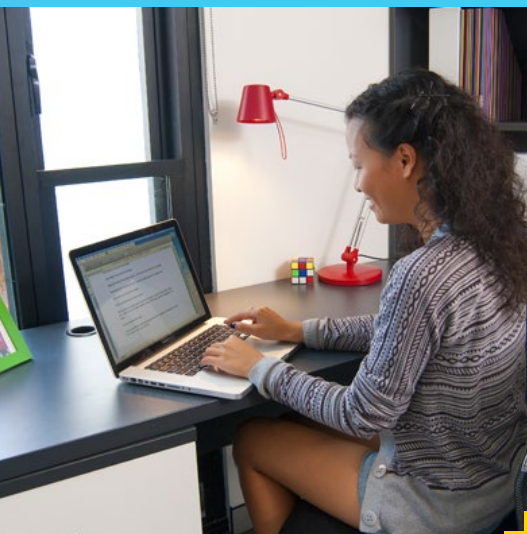
ELC Premium Apartments

STUDENT RESIDENCE



4/4

Ensuite single room



Your ensuite single room inside the apartment

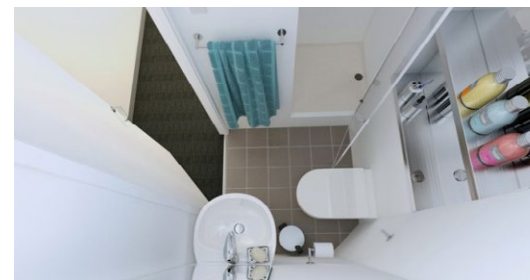
Bedroom facilities

- > Ensuite (private bathroom with shower)
- > Personal setting for air-conditioning
- > Large window
- > King size single bed and comfy mattress
- > Towel and bed linen provided (duvet, pillow, sheets, pillow cases and mattress protector)
- > High speed WiFi
- > Study desk
- > Standard room size: 14m²
- > Built in wardrobe and extra storage
- > Bedside light
- > Full length mirror
- > Pin boards
- > Blinds

Bedroom plan



Private bathroom



Iglu Chatswood

STUDENT RESIDENCE



1/4

Residence features



Iglu Chatswood is a modern international student residence, located less than a 30-minute commute to ELC. We offer two 5-bedroom apartments reserved exclusively for ELC students. Inside each apartment, the 5 students each have their own ensuite single room, share a kitchen and lounge area and enjoy access to all residence facilities.

Residence features

Location

The residence is located right next to Chatswood train station. Trains to Town Hall run every 3 to 10 minutes, for a 20-min train ride, making the student's journey from their bedroom to their classroom less than 30 minutes!

Chatswood is a modern, cosmopolitan and vibrant neighbourhood with all possible amenities students can wish for. A major premium shopping centre is located just a 5-min walk from the residence, featuring major shops, restaurants, grocery stores and cinema.

Residence facilities

- > Secure swipe card access and intercom.
- > Reception open from 9.00am to 7.00pm Mon-Fri (9:30-6:00 on weekends). Security staff are onsite 24/7. Resident student leaders can assist with early or late check-ins or departures.
- > Modern building with free unlimited high-speed wifi
- > Landscaped courtyard with BBQ
- > Study rooms
- > Large student lounge
- > Cinema room
- > Table tennis
- > Gym
- > Modern laundry
- > Secure bike storage
- > Vending machines and more

Note: Although Iglu advertise a complimentary light breakfast for all residents, the hours at which this breakfast is made available limits the ability for ELC students to benefit from this complimentary service.

Activities

The residence has a monthly activities program. Students have the opportunity to explore Sydney, participate in events and connect with other residents.

Other students in the residence

The residence offers a diverse nationality mix with students from all over the world, including many Australian students, making it an excellent option for ELC students.



Iglu Chatswood

STUDENT RESIDENCE



2/4

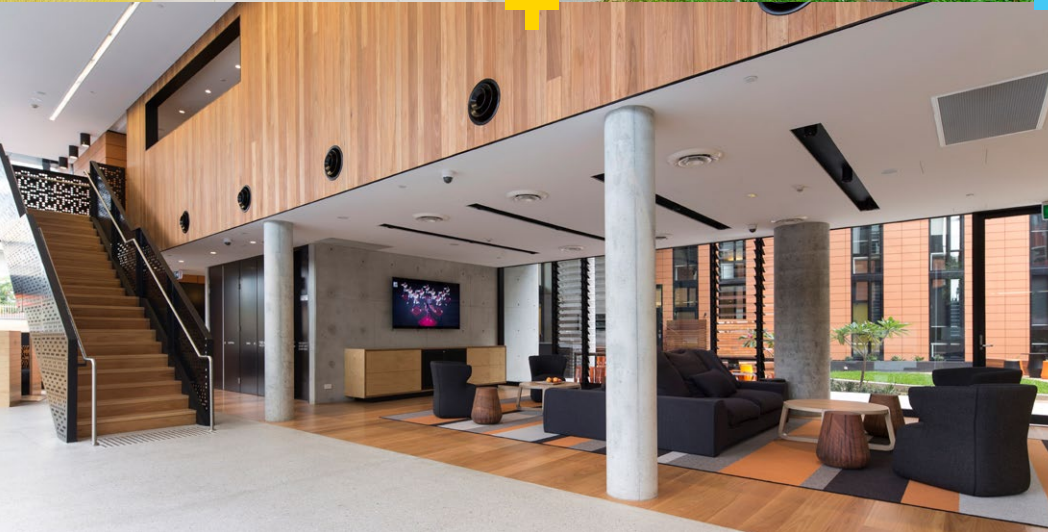
Residence features



IDEAL FOR
STUDENTS WHO...



- > *want to experience life in a student residence and a shared apartment*
- > *want higher standards and access to modern facilities*
- > *want to enjoy top quality ensuite single rooms and are happy to be just outside the city centre*
- > *want to have an inter-cultural experience with students from all over the world*



MAIN TERMS



- > There is a minimum stay of 4 weeks.
 - > Upon arrival, you will need to sign a copy of the residence rules.
 - > A \$500 security deposit will be collected at school on your first day. A refund will be processed after check out minus any fees for damage to the property. Students should expect bank charges to apply for both transactions
 - > Min 8 weeks' notice applies for any changes both before arrival and for early departures.
- Refer to our published Terms and Conditions for full details.



Iglu Chatswood

STUDENT RESIDENCE



3/4

Apartment features



The apartments inside the residence

The two ELC apartments each feature 5 large ensuite single bedrooms and a large lounge and kitchen area for the 5 ELC students to share. The apartments are bright, modern, fully-furnished and equipped. Students cook for themselves or share with their flatmates. The apartment is air-conditioned and features natural light and fresh air from large windows.

Lounge and kitchen area facilities include

- > Secure swipe card access
- > Television with Apple TV
- > Lounge area with couch/coffee table
- > Dining table and chairs
- > Fully-equipped modern kitchen
- > Main kitchen equipment: oven, microwave, stovetop, large refrigerator, freezer, kettle and toaster
- > Cleaning equipment

The lounge and kitchen area is cleaned by residence staff fortnightly.

Price	2024-2025
Placement fee	\$395
Weekly fee	\$615/w
Launch special (Jul-Aug 2024)	\$520/w
Low season special (May-August 2025)	\$550/w
52-week special (regardless of time of year)	\$545/w

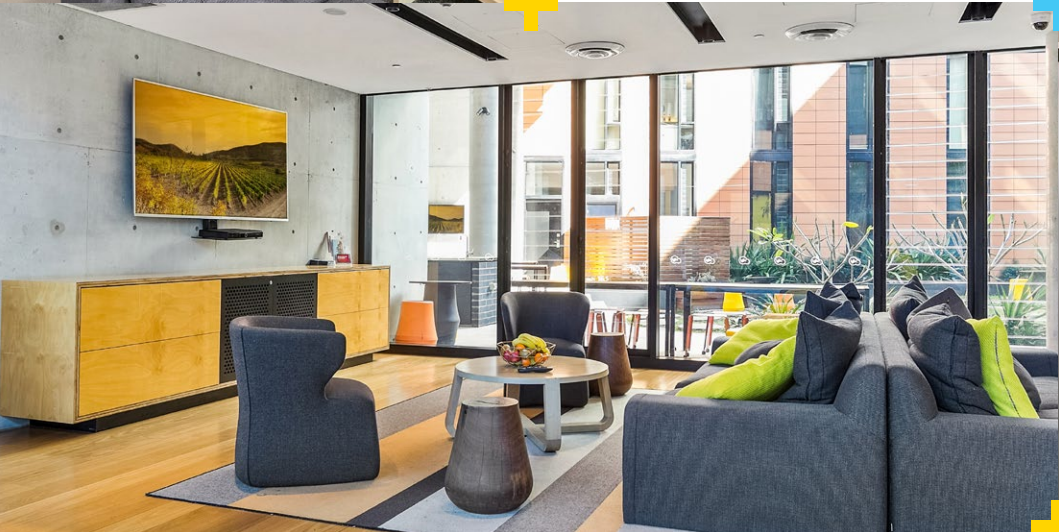
The residence apartments will open on 15/07/2024.

Launch special: Nights taking place from 15/07/2024 until 31/08/2024 will be invoiced at a rate of \$520/w.

Low season special: Nights taking place from 01/05/2025 until 31/08/2025 will be invoiced at a rate of \$550/w.

All 1-year (52 weeks) enrolments will benefit from a rate of \$545/w.

Note that the placement fee includes both the Iglu admin fee, linen fee and exit cleaning fee.



Iglu Chatswood

STUDENT RESIDENCE



4/4

Ensuite single room



Your ensuite single room inside the apartment

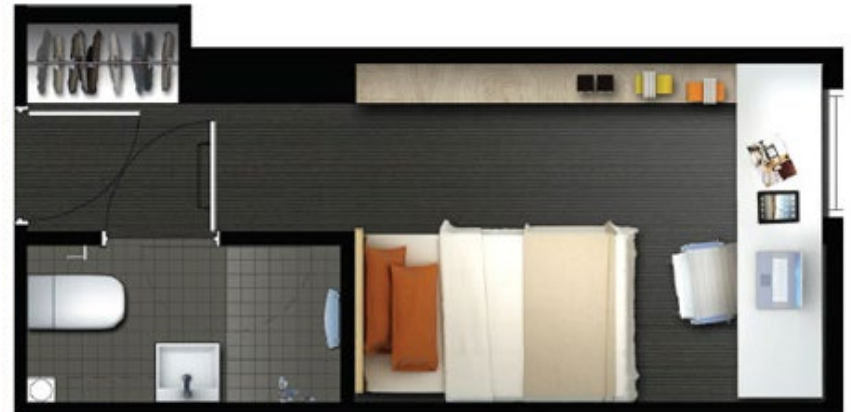
Enjoy your own modern and comfortable single room with private bathroom.

Bedroom facilities

- > Secure swipe card access
- > King single bed with under-bed storage
- > Towel and bed linen provided
- > Private bathroom
- > Built-in reading light
- > Study desk, chair and lamp
- > Pinboard and bookshelf
- > Plenty of storage
- > Built-in wardrobe
- > Full length mirror
- > Acoustic louvre windows
- > Personal setting for air-conditioning
- > Room size: 12-14m²



Bedroom plan



Homestay

1/2

Homestay

Experience cultural exchange and genuine hospitality while immersing yourself in a new environment and improve your English by speaking with your host family every day.

Fantastic families

Families are carefully selected for their warmth and genuine interest in the student's wellbeing.

Location

All homes are located close to public transport and usually 35 to 60 minutes travel time to the college.

Facilities

The student's bedroom will be furnished with a single or double bed, a wardrobe, a dressing table or chest of drawers, adequate lighting and a desk. If there is no desk in the bedroom students will have a space elsewhere in the house where they can study comfortably.

Meals

Breakfast and dinner are included every day. Lunch is also included at the weekends.

Internet

Internet access will be made available to students at the homestay but usually at extra cost. All students will have free unlimited internet access from our computer lab and WiFi service at school.

Other students

Many host families only accommodate one student but some families welcome 2 or more international students. When that's the case, we will make sure that there are no other students of the same mother tongue in the household.

Laundry

Bed linen and towels are provided by the host family. Students usually wash their own personal clothing using the host's appliances and with the host's assistance. Ironing, handwashing or dry cleaning are in any case the responsibility of the student.

Quality standards

We have a dedicated Homestay Coordinator who ensures that our students are always well looked after. We regularly inspect homes to ensure that the high standards are maintained. We actively collect feedback from all students about their stay with their host family to ensure that they feel comfortable and welcome.



Homestay



2/2



IDEAL FOR STUDENTS WHO...



- > would like to experience cultural exchange
- > would like to receive care and support from a host family
- > want to maximize their studies and avoid having to shop for food and cook

HOMESTAY REQUIREMENTS



At the time of enrolment, we will need to know the students' homestay requirements before we can arrange the placement.

HOMESTAY PREFERENCES



We will also give students the opportunity to indicate homestay preferences which we will try to honour as much as possible when finalising the match.

SPECIAL REQUESTS



ELC may also be able to organise homestay placements for students with particular needs such as specific dietary requirements, executive homestay, or a room with a private bathroom.

Prices	2024	2025*
Homestay placement fee	\$360	\$375
Single room	\$400/w	\$440/w

- > For special requests such as special dietary requirements, private bathrooms or executive homestays, please contact ELC.
- > The above fees do not include internet access. If a student requires Internet access, a \$10/w fee is payable directly to the family upon arrival.
- > *Exact, final 2025 prices will be confirmed around July-September 2024. Until further notice, for bookings with nights taking place in 2025, the 2025 rates above will apply as follows: the 2025 placement fee will apply to all arrivals in 2025; the 2025 homestay weekly fees will apply to all new bookings for nights at Homestay taking place from 01/01/2025. (This means that 2 rates will apply to students arriving in 2024 and staying onto 2025: they will be invoiced 2024 rate for nights until 31/12/2024 and 2025 rate for nights from 01/01/2025.)
- > Contact ELC for prices for special requests.



Student Home

STUDENT APARTMENTS



1/2

Student Home

Convenient, simple student shared apartments, ideally located only 15-min walk to school, close to beautiful Darling Harbour, Central station, Broadway and Chinatown.

The apartments

The 4 Student Home apartments (formerly known as Studyhouse 617) are simple, no-frills shared apartments located on each floor of a 4-storey building in Ultimo, just a 15-min walk to the college. Each welcomes 8-10 international students, most of whom study at ELC.

Common areas

- > Fully-equipped kitchen, with small breakfast bar (no dining table)
- > Students cook for themselves or share with their flatmates
- > Lounge with flat-screen TV & DVD player
- > Air-conditioning in the lounge and kitchen area
- > 2 bathrooms in all apartments
- > Shared laundry facilities (coin operated)
- > Professional cleaners clean all floors and communal facilities several times a week.

Bedrooms

The bedrooms are small and no-frills. They include a single bed and an individual wardrobe + desk unit per student.

- > Choice of single, twin or triple room
- > OK to book individuals into twin or triple rooms (share with same gender)
- > Bed linen provided
- > Room sizes: rooms are small but well arranged, with size range as follows: Single: 5-9m²; Twin: 8-12m²; Triple 14m²

Internet

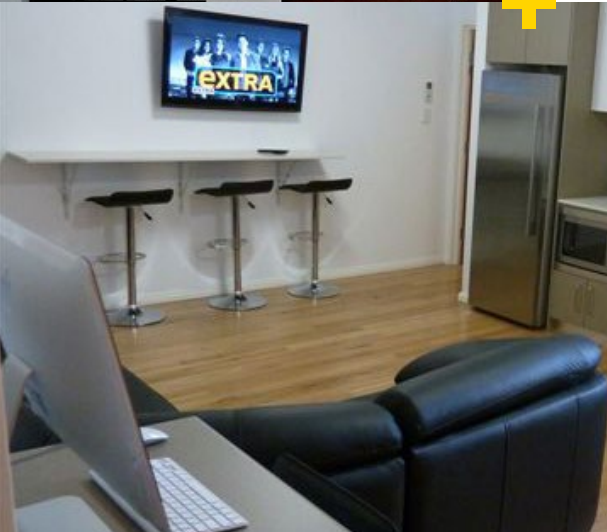
- > 1 Apple-Mac computer for students' use in each apartment
- > Free unlimited high-speed WiFi throughout

Safety

- > Very safe neighborhood
- > Swipe card entry to the apartments
- > Keypad locks on bedroom doors
- > Lockable wardrobes (own padlocks)
- > No staff on site but house manager on call

Location

The apartments are located in Ultimo, a 15-min walk to the college and the city centre in general and very close to Darling Harbour. Darling Harbour is a stunning Sydney attraction, featuring the IMAX cinema, Maritime museum, Sydney Aquarium, Wildlife World and Madame Tussaud's museum, as well as shops, restaurants, cafes and bars. Students will also find a public library and an aquatic centre within a 5-min walk of the apartments. They are also very close to Central station, Broadway and Chinatown.



Student Home

STUDENT APARTMENTS



2/2



IDEAL FOR STUDENTS WHO...



- > want to experience life in shared accommodation and do not mind sharing with up to 10 students
- > want to have an inter-cultural experience with students from all over the world
- > are more independent or well-travelled
- > want to be within walking distance to the city centre and to school



Prices	Fees applicable to bookings lodged until 30/06/2024	2025*
Accommodation placement fee	\$250	TBC
Single room	\$400/w	TBC
Twin room pp	\$325/w	TBC
Triple room pp	\$310/w	TBC
Short booking fee (14-26 nights)	\$50	TBC

*Note that the current rates are guaranteed for all bookings lodged by 30/06/2024. New rates (still TBC) are expected to apply to new bookings lodged from 01/07/2024.

MAIN TERMS



- > There is a minimum stay of 2 weeks. For stays of 2-4 weeks, an additional short-booking fee applies.
- > Students will need to sign a residents' agreement upon arrival.
- > A security deposit (bond) may be required when you move in.
- > Minimum 4 weeks' notice applies for cancellations as well as for early departures.



Link2

STUDENT APARTMENTS



1/2

Link2

Convenient, air-conditioned student shared apartments right in the city centre, close to public transport and a 10 to 15-min walk to school.

The apartments

The Link2 apartments are located close to Central station, on busy streets in the heart of the city. Each apartment welcomes 10 to 14 international students in single or twin rooms and sharing the communal areas.

Common areas

- › Fully-equipped kitchen, with small breakfast bar (no dining table)
- › Students cook for themselves or share with their flatmates
- › Lounge with Plasma TV
- › Air-conditioning throughout
- › 2-3 bathrooms per apartment (Maximum ratio of 5 students per bathroom)
- › Shared laundry facilities (coin operated)
- › Professional cleaners clean all floors and communal facilities several times a week

Bedrooms

- The bedrooms are small with simple furniture. They include a single bed and an individual wardrobe + desk unit per student and are air-conditioned.
- › Choice of 4 room types: single, ensuite single (private bathroom), twin room or ensuite twin room. (Note that Link2 only offer 2 ensuite single rooms and these are typically booked 6 to 9 months in advance.)
 - › OK to book individuals into twins (share with same gender)
 - › Air-conditioned
 - › Individual wardrobe and desk unit
 - › Room sizes: rooms are small but well arranged, with size range as follows: Single: 5.5-9m² Twin: 11-14m²

Internet

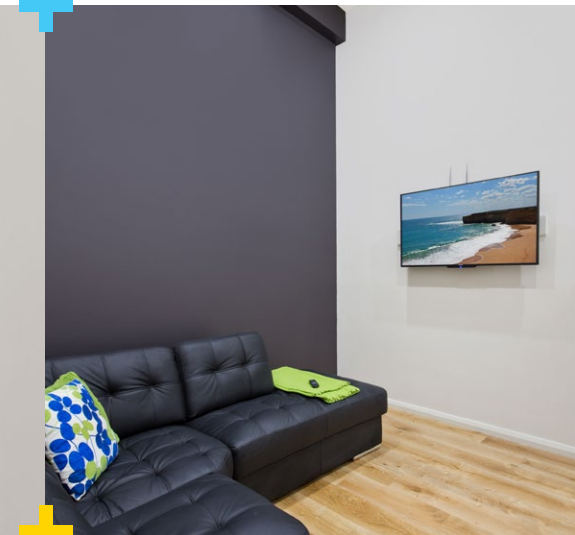
- › 1 iMac computer for students' use in each apartment
- › Free unlimited WiFi, with highest speed fibre-optic internet network, with exclusive connection for up to 3 devices per student.

Safety

- › Swipe card entry to the apartments
- › Swipe card entry to the bedroom
- › No staff on site but house manager on call

Location

The apartments are conveniently located on George St and Broadway, Sydney's busiest streets: students will enjoy shops, cafes, restaurants, pubs and entertainment options right on their doorstep. The walk to school is very short and easy: only 10 minutes. Also, being located so close to Central station, Sydney's main bus and train hub, students will be able to access any part of Sydney and its surroundings very quickly.



Link2

STUDENT APARTMENTS



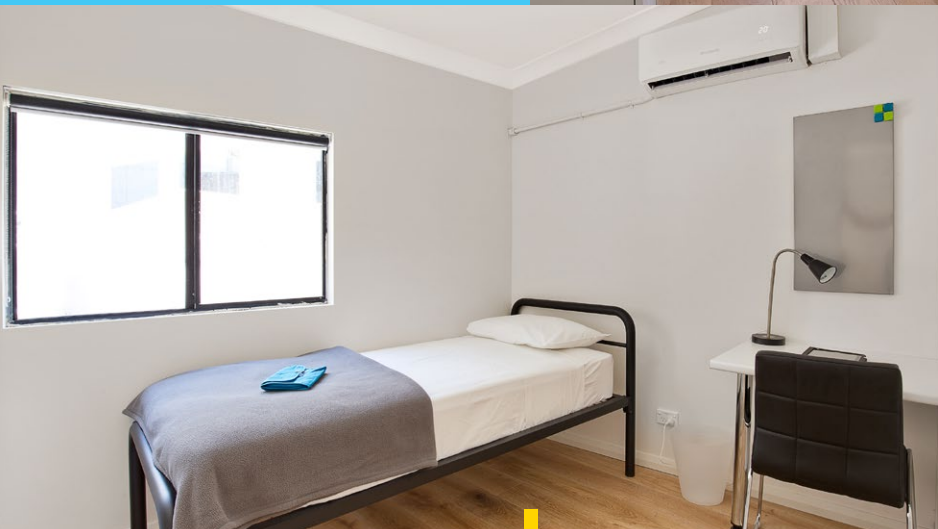
2/2



IDEAL FOR STUDENTS WHO...



- > want to experience life in shared accommodation and do not mind sharing with 10-14 students
- > want to have an inter-cultural experience with students from all over the world
- > are more independent or well-travelled
- > want to experience the bustling city life
- > want to be in the city centre and within walking distance to school



Prices	2024	Fees applicable for nights in 2025*
Accommodation placement fee	\$220	\$220
Single room	\$455/w	\$475/w
Ensuite single room	\$575/w	\$600/w
Twin room pp	\$345/w	\$360/w
Ensuite twin room pp	\$405/w	\$425/w
Short booking fee (14-26 nights)	\$75	\$75

*Exact, final 2025 prices will be confirmed around July-September 2024. Until further notice, for bookings with nights taking place in 2025, the 2025 rates above will apply as follows: the 2025 fees apply to all new bookings for nights at Link2 taking place from 05/01/2025. (This means that 2 rates will apply to students arriving in 2024 and staying onto 2025: they will be invoiced 2024 rate for nights until 04/01/2025 and 2025 rate for nights from 05/01/2025.)

MAIN TERMS



- > There is a minimum stay of 2 weeks. For stays of 2-4 weeks, an additional short-booking fee applies.
- > A credit card imprint will be required when students move in as security. A charge of up to the equivalent of 4 weeks' rent will only be made in cases of damage to the property.
- > Students will need to sign a residents' agreement at the time booking (i.e. before arrival).
- > Min 4 weeks' notice applies for cancellations before arrival as well as for early departures.
- > Additionally, a break of contract fee is charged for early departures (equivalent to 1 or 2 weeks rent).



CozyStay

STUDENT HOUSES

1/2



CozyStay (2Stay)

Comfortable budget share houses offering twin share rooms and located in pleasant neighbourhoods, 30 to 45 minutes bus or train ride to school.

The houses

CozyStay offer numerous student shared houses in popular Sydney suburbs, each welcoming between 4 and 12 students. Each house is unique but all offer the following common features:

Common areas

- > Fully-equipped modern kitchen
- > Comfortable lounge area with TV
- > Shared by 4-12 students, with proportionate lounge and kitchen areas
- > Max ratio of 5 students per bathroom
- > Coin operated laundry facilities in each house
- > Students typically share the cleaning with their flatmates (every week, a roster is made by the house manager clearly stating everyone's housekeeping task for the week). Professional cleaners typically clean the bathrooms once a week

Bedrooms

- > Choice of single or twin rooms
- > OK to book individuals into twin rooms (share with same gender)
- > Personal wardrobe with mirror.
- > Shared desk in each room
- > Linen: only bed sheets and a pillow are included. No doona, blanket or towels are provided.

Location

All houses are located in popular, cosmopolitan and safe Sydney suburbs, such as Kingsford, North Sydney and Randwick. Students will be allocated to a designated house based on their travel date and cannot select a particular neighbourhood or house. All houses are located between 30 and 45 mins commute time to the city centre and to ELC (for instance 25-min bus ride plus 10-min walk)

Internet

You will enjoy free unlimited high speed WiFi in the common areas of your house.

Safety

- > Very safe neighborhoods
- > Personal key to your bedroom
- > House manager in each house



CozzyStay

STUDENT HOUSES

2/2



IDEAL FOR STUDENTS WHO...

- > want to experience life in shared accommodation
- > want to have an inter-cultural experience with students from all over the world
- > are more independent or well-travelled
- > have a more limited budget

Main terms

- > There is a minimum stay of 4 weeks and a maximum stay of 12 weeks.
- > Only offshore students (students not yet in Australia) may apply for this accommodation option.
- > All bookings must be received minimum 4 weeks prior to arrival.
- > Students will need to comply with the house rules. Non-compliance may lead to eviction.
- > Students are required to share the cleaning duties according to a set roster. Non-compliance may lead to eviction.
- > Minimum 4 weeks' notice applies for cancellations before arrival as well as for early departures.

Prices

	2024	2025
Accommodation placement fee	\$320	\$335
Twin room pp	\$295/w	\$310/w





**English Language Company
Australia Pty Ltd**

CRICOS Provider 02551G
ABN: 89 103 550 090

e. info@elc.edu.au
www.elc.edu.au/english

ELC Career College Pty Ltd

RTO: 91721 | CRICOS Provider 00051M
ABN: 34 051 281 380

e. info@elc.edu.au
www.elc.edu.au/vocational

495 Kent St
Sydney NSW 2000
Australia

t. +61 2 9267 5688

Last updated on 10 April 2024.